

Listening

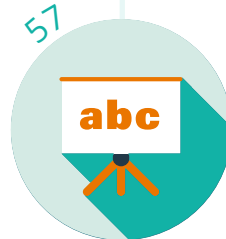
The Global Scale of English is transforming English teaching and learning, offering a granular, real-world measure of English language proficiency across the four skills. Some examples of what a learner can do in Listening on the GSE scale:



Can **understand short, simple instructions** addressed carefully and slowly



Can **generally identify the topic of discussion around them** when conducted slowly and clearly



Can **follow most of a clearly structured presentation** within their own field



Can **follow an animated conversation** between two fluent speakers



Can **understand a phone number** from a recorded message



Can **follow many films** in which visuals and action carry much of the storyline



Can **extract the main points from news items**, etc. with opinions, arguments and discussion



Can **understand in detail discussions on abstract and complex topics** among speakers with a variety of accents and dialects

Reading

The Global Scale of English is transforming English teaching and learning, offering a granular, real-world measure of English language proficiency across the four skills. Some examples of what a learner can do in Reading on the GSE scale:



Can **read and understand simple prices**



Can **understand simple technical information** (e.g. instructions for everyday equipment)



Can **recognise the writer's point of view** in a structured text



Can **understand complex arguments** in newspaper articles



Can **understand short written notices, signs and instructions** with visual support



Can **identify the main topic and related ideas** in a structured text



Can **recognise the repetition of ideas expressed** by substitution, paraphrasing, etc



Can **understand highly colloquial language in unstructured texts** that use complex structures

Speaking

The Global Scale of English is transforming English teaching and learning, offering a granular, real-world measure of English language proficiency across the four skills. Some examples of what a learner can do in Speaking on the GSE scale:



Can **tell the time of day** to within five minutes



Can **give a short basic description of events and activities**



Can **engage in extended conversation** in a clearly participatory fashion on most general topics



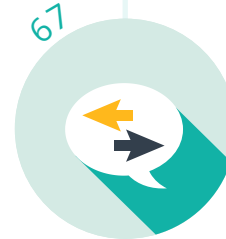
Can **carry out an effective, fluent interview**, spontaneously following up on interesting replies



Can **say what they like and dislike**



Can **repeat back what is said to confirm understanding** and keep a discussion on course



Can **adjust to the changes of direction, style and emphasis** normally found in conversation




Can **join a conversation already in progress** between fluent speakers on complex topics

Writing

The Global Scale of English is transforming English teaching and learning, offering a granular, real-world measure of English language proficiency across the four skills. Some examples of what a learner can do in Writing on the GSE scale:




10



Can write the letters of the alphabet in upper and lower case

31



Can use very basic connectors like and, but, so and then

46



Can write a description of a future event or activity

59



Can write a formal email/letter of thanks or apology with appropriate conventions

74



Can write a detailed description of a complex process

26



Can use basic punctuation (e.g. commas, full stops, question marks)

36



Can make simple comparisons between people, places or things

52



Can summarise the main message from simple diagrams (e.g. graphs, bar charts)

65



Can write a letter of complaint with appropriate register, structure and conventions

77



Can write a detailed critical review of cultural events (e.g. plays, films, concerts) or literary works