

## BEC PRELIMINARY PRACTICE TEST LISTENING

### PART ONE

#### Questions 1 – 8

For questions 1 – 8 you will hear eight short recordings.  
For each question, mark **one** letter (**A**, **B** or **C**).  
You will hear the eight recordings twice.

#### Example:

What does Jane's boss want her to do?

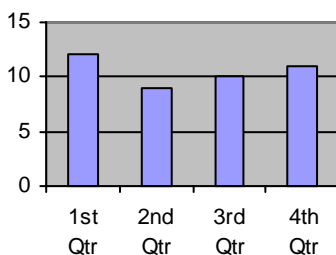
- A** look in his briefcase for the sales statistics
- B** send a copy of the project data file
- C** reply to his email before the end of the day

The answer is **B**.

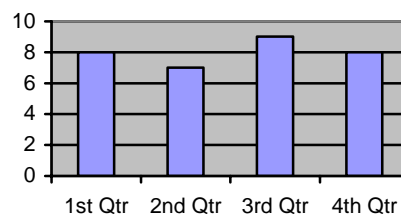
1 Which chart is correct?

#### OVERTIME HOURS

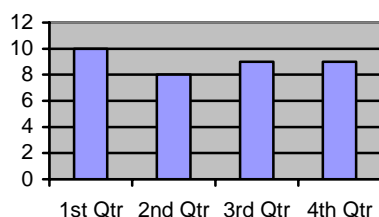
**A**



**B**



**C**



## BEC PRELIMINARY PRACTICE TEST LISTENING PART ONE (cont. ...)

2 Which room will they use for the conference?

THE STAR

A

THE ROSE

B

THE MOON

C

3 What will they spend the extra money on?

- A staff
- B space
- C equipment

4 When will Mr Abdi arrive?

3.45

A

3.15

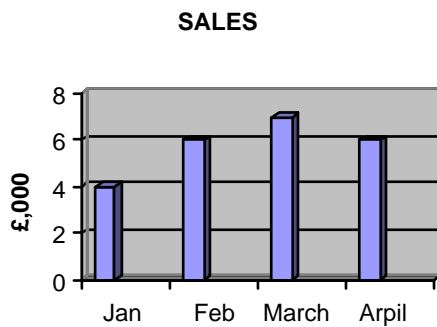
B

4.15

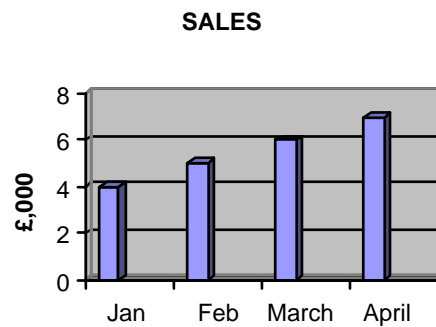
C

## BEC PRELIMINARY PRACTICE TEST LISTENING PART ONE (cont. ...)

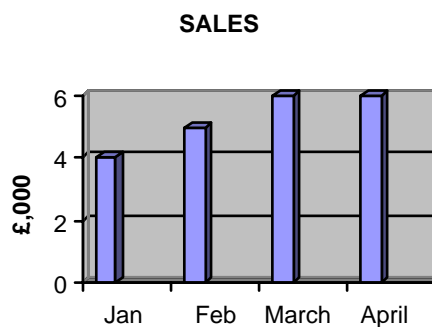
- 5 Why is the factory closing?
- A Demand for their products has fallen.
  - B A new factory has just been built.
  - C Products are now made in another country.
- 6 What do they agree is most important for the job?
- A Ability to motivate others.
  - B Ability to work alone.
  - C Ability to solve problems.
- 7 Which chart is correct?



**A**



**B**



**C**

## BEC PRELIMINARY PRACTICE TEST LISTENING PART ONE (cont. ...)

- 8 The company had to change supplier because of
- A increased demand
  - B higher costs
  - C quality problems