

Accurate

With a 0.99 correlation, Versant test scores generated by the Versant testing system are virtually indistinguishable from expert human scoring, ensuring confidence in the results.



Reliable

The Versant English Placement Test is highly reliable (split-half reliability of 0.96), delivering more consistent testing without the variability typical of multiple evaluators and locations.



Fast

Versant is fully automated and can be easily taken over a computer by large groups of candidates. A detailed score report is available minutes after the test is completed.

Versant English Placement Test

The Versant™ English Placement Test is an English proficiency test which measures the English speaking and writing skills of individuals whose native language is not English. Universities, private language schools, and corporate training programs around the world use the test to evaluate the ability of students and staff to understand and communicate clearly in English.

The Versant English Placement Test takes only 50 minutes and results are available online within minutes after the test is completed, allowing for quick, yet accurate placement decisions. Test questions reflect many different situations in the classroom and real world including reading aloud, conversations, dictations, summarizations, and email correspondence. Versant English Placement Tests can be taken on a computer either in online (web browser) or offline (computer software) mode.

Sophisticated Automated Scoring Technology

With the state-of-the-art Versant testing system, tests are scored automatically within minutes. The Versant testing system uses speech processing technology to measure speaking and listening skills. This system was built to handle the different rhythms and varied pronunciations used by native and non-native English speakers. The testing system is able to generate scores based on the words used in the spoken responses, as well as the pace, fluency, and pronunciation of those words in phrases and sentences.

The Knowledge Analysis Technologies (KAT) engine measures written English skills and evaluates the meaning of text by examining whole written passages. The KAT engine is based on Pearson's unique implementation of Latent Semantic Analysis (LSA), an approach that generates semantic similarity of words and passages by analyzing large bodies of relevant text. LSA can then "understand" the meaning of text much the same as a human reader.

Versant English Placement Test Features

Purpose

- Course Placement
- Progress Monitoring
- Exit Exam
- Training Programs

Duration of Test

- ~50 minutes

Number of Questions

- 81

Question Types

- Read Aloud
- Repeat
- Sentence Builds
- Conversations
- Typing
- Sentence Completion
- Dictation
- Passage Reconstruction
- Summary & Opinion

Validity and Reliability

- Versant has been extensively field tested and evaluated to verify its validity and reliability.

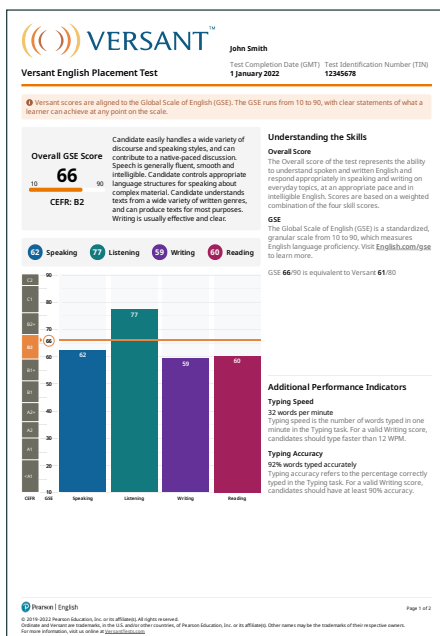
Score

Precise score in the range of 10 to 90

- Overall score
- Diagnostic subscores in speaking, listening, reading, and writing
- Detailed explanation of language capabilities
- Suggestions for improvement
- Typing speed and improvement
- Score mapping to CEFR

Test Security

- Secure capture and storage of candidate responses
- Anonymous test ID numbers to ensure data privacy



The score report is available within minutes and includes the candidate's overall score and subscores, with detailed explanations of language capabilities.

Validity and Reliability

Versant has been extensively field tested and evaluated to verify its validity and reliability. Learn more about the test's validation findings in our detailed *Versant English Placement Test: Test Description and Validation Summary*.

Simple Test Administration - 1, 2, 3, 4

- 1 The test administrator sends the test taker a test invite via the online admin tool, ScoreKeeper.
- 2 The test taker enters their unique test ID on the secure Versant testing site to start the test.
- 3 The test taker answers the test questions and the answers are scored automatically.
- 4 The test administrator retrieves the test taker's detailed score report from ScoreKeeper.

Contact Info

To try a sample test or get more information, contact us at: sales@pearsonkt.com or visit us online at www.VersantTests.com