

Onscreen Assessment

Your questions answered



Our panel



Andrew Sargeant
Assistant Head KS4
*Jumeriah English
Speaking School*



Wayne Ridgeway
Head Teacher Senior School
British School of Bahrain



Tim Brady
Subject Advisor for
Computer Science
Pearson



Katie Templar
Deputy Head Secondary
Qatar International School



Oli Trussell
Lead Solutions Engineer
Google for Education team

Where we are...

Meredith Reeve



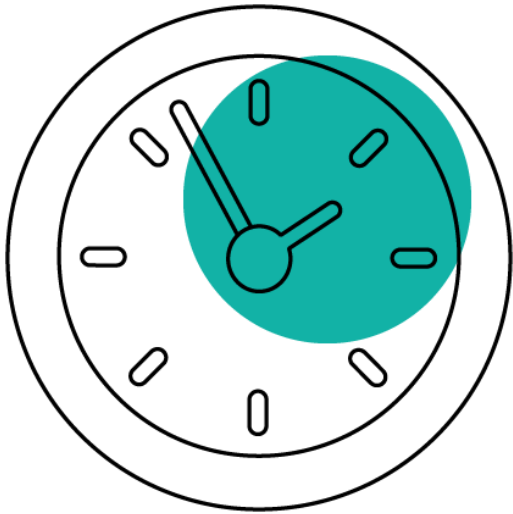
Pearson's view: The future of qualifications and assessment

“Assess the **right skills** in
the **right way**, enabling
learners to **highlight** their
strengths and successes.”

- Recommendation 5



What schools say...



Early 2021: 1,000
teachers polled

51% said they'd be
interested in adopting high-
stakes onscreen assessment
now if it were available in
their subject

65% said they would be
interested in adopting high-
stakes onscreen assessment
within 1–4 years

November 2022:
EdTech Summit

100% said they would be
interested in adopting high-
stakes onscreen assessment
within the next 5 years
if it were available in their
subject.



4,000

students sat
onscreen
exams in 2021

Student numbers
doubled for
onscreen exams
in 2023

90%

of students who sat their exams in 2022
said they wanted their school to offer
more onscreen exams in the future

100%

of teachers who registered students for
onscreen exams in 2022 registered
students for 2023 onscreen exam series
too!

Our International GCSE Onscreen Roadmap

2023

- International GCSE English Language A
- International GCSE English Literature
- GCSE Computer Science

2024

- International GCSE Business
- International GCSE History
- International GCSE Economics
- IAL English Language & IAL English Literature

2025

- International GCSE Geography
- International GCSE Islamic Studies
- International GCSE Pakistan Studies

2026

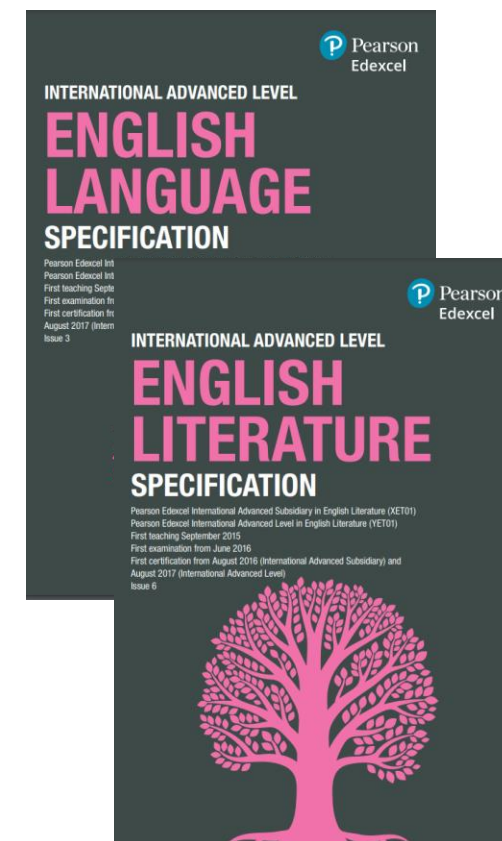
- International A Level Business
- International A Level History

What's next

You can register your interest for delivering onscreen assessments from 2024 onwards [here](#).

First assessment	Qualification and subject	Linear/modular assessment
2022	International GCSE English Language A	Linear & modular* (from May/June 2024)
2023	International GCSE English Literature	Linear & modular* (from May/June 2024)
2024	International GCSE Business	Linear
	International GCSE Economics	Linear & modular* (from May/June 2024)
	International GCSE History	Linear & modular* (from May/June 2024)
	International A level English Literature*	Modular
	International A level English Language*	Modular
2025	International GCSE Geography	Linear & modular*
	International GCSE Pakistan Studies*	Linear
	International GCSE Islamic Studies*	Linear

*Only available to international centres



The onscreen journey

Julie Sinclair & Alexa Hathaway
Customer Engagement Team
internationalonscreen@pearson.com



Customer Engagement Timeline Guidance



1 Subject interest, support & familiarisation

From Sept – [expressions of interest](#) & technology approval begins

From Oct/Nov – customer engagement calls begin & [familiarisation](#) set up (*past papers & testlets*)

From Dec – introduction to the entry process

2 Support, practice & confirm entries

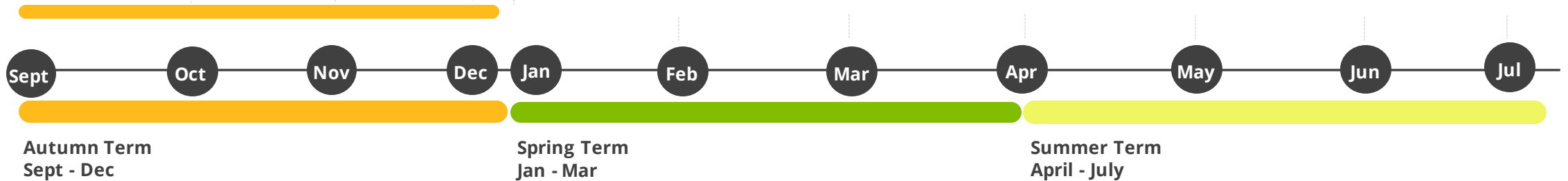
From Jan/Feb – continued support for entry process & familiarisation of platform

Mar – Entry deadline - Thursday 23 March 2024

3 Support, final practice & live exams

From Apr – entry summary, tech check & security set up

May/June – Exam series begins
Assessment delivery support (e.g. invigilator & candidate logins)



Sample Assessment Materials (SAMs) on Sandbox

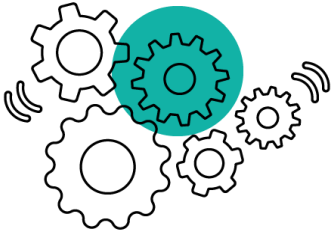
Centres can access SAMs for all subjects that are being offered onscreen in May/June 2024 by going to the [Sandbox](#).

Anyone (teachers, students, parents) can register by following the steps below:

- Go to:
<https://assessment.mod.pearson.com/sandbox/login>
- Click on “Don’t have an account”
- Enter your email address as your UserID
- Wait for an automatic email to confirm your email address
- Proceed to log in



Technology requirements



Operating System/Browser	Windows	macOS	Android	Chrome OS
Chrome latest stable	✓	✓	✓	✓
Firefox latest stable and ESR	✓	✓	✗	✗
Safari latest stable	✗	✓	✗	✗
Edge latest stable	✓	✗	✗	✗

Currently it is only Chromebooks that **must** be centre-owned. Windows laptops or Macbooks can be centre- or student-owned.

Platform Familiarisation

[Mocks Service](#)

Our mocks run as an 'on-demand' service and the mock paper availability for 2023/2024 is available [here](#). Please scroll to the bottom of the document for International qualifications.

The mock opportunities will give your students a chance to experience the platform and respond to questions under an exam-style scenario.

For May/June 2024, for centres looking to deliver one of our onscreen high stakes assessments, we are able to offer 15% off a mock entry for their high stakes cohort of learners.

Mock Service team inbox:
assessmentservices@pearson.com



Free resources

Testlets (4EA1 & 4ET1 only)

These are mini assessments created by breaking down exam papers into sections. There are testlets available for both the International GCSE English Language A and Literature qualifications.

Past papers

These will soon be available for all the onscreen qualifications being delivered in May/June 2024 with work also ongoing for creation of the May/June 2025 subjects also.

[Onscreen familiarisation materials request form](#)



Our Assessment Platform

Booking App

This is where candidate information is uploaded for our [Mocks Service](#) and where you can assign any [onscreen familiarisation material](#) that has been requested.

You are also able to manage invigilators as well as access student scripts that have been submitted.



Invigilator App

This is where your invigilators can view their current, upcoming & completed invigilation sessions as well as view candidate connectivity and monitor progress through [past papers/testlets](#), [mock assessments](#) & the live high stakes exams.

Support video: [An introduction to our invigilator platform](#)



Assessment Player

This is where your candidates access any assessment materials that have been assigned to them.

As with the [Invigilator App](#), they can also view their current, upcoming & completed assessments.

Support videos: [Using & interacting with the Assessment Platform](#)



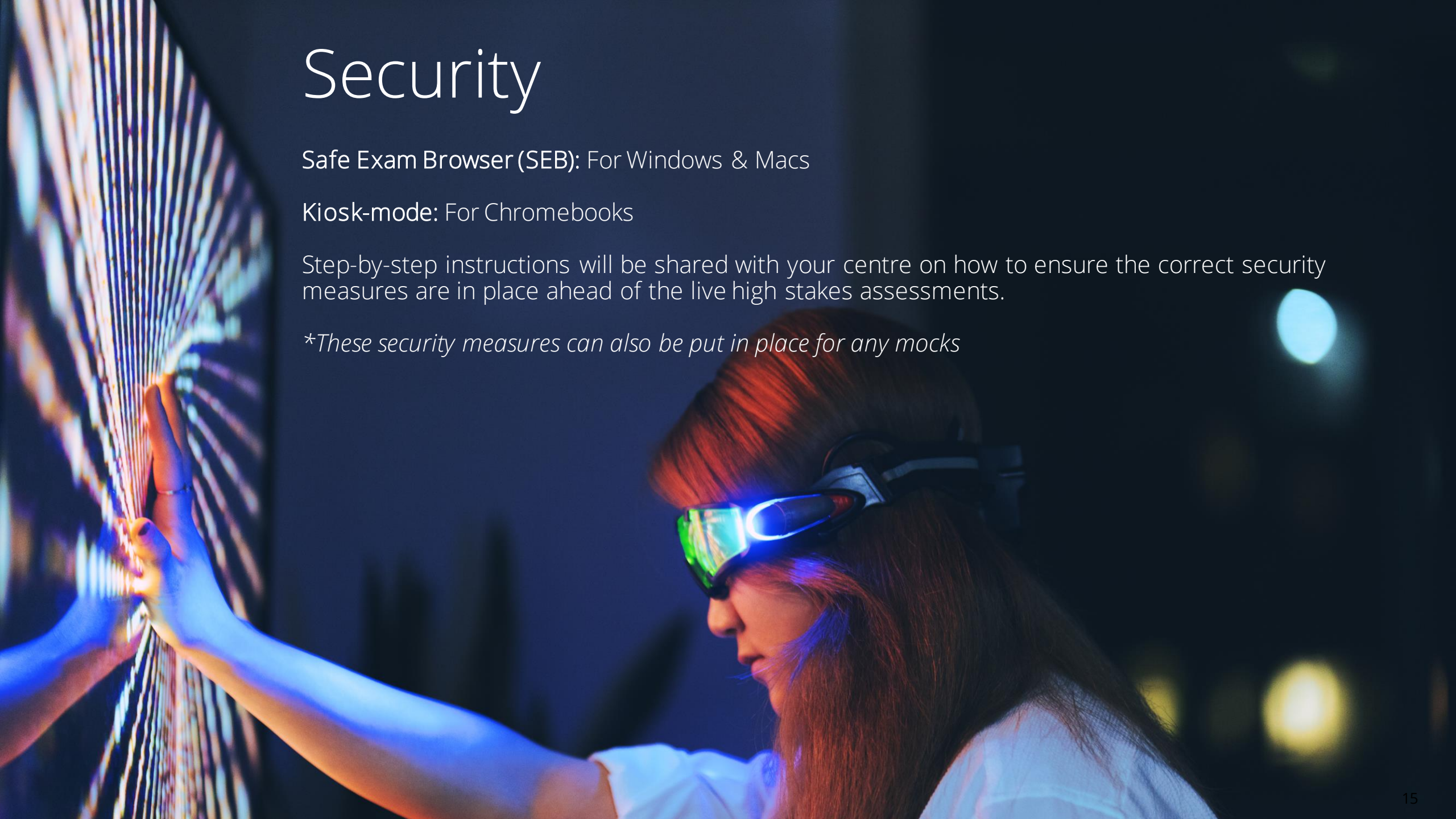
Security

Safe Exam Browser (SEB): For Windows & Macs

Kiosk-mode: For Chromebooks

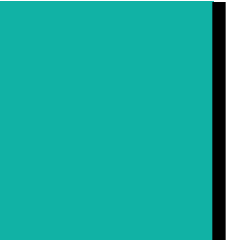
Step-by-step instructions will be shared with your centre on how to ensure the correct security measures are in place ahead of the live high stakes assessments.

**These security measures can also be put in place for any mocks*





What happens
when there is a
loss of internet
connection?



What happens when there is a loss of internet connection?

If the **internet drops out** during the assessment, candidates should continue with their exam as their work will be saving locally to their device. As soon as the internet connection is restored all their answers will be saved onto the system.

If the internet connection **does not get restored**, we will work with you on retrieving the candidate's work from their device so that it can be sent on to our examiners for marking but no matter what happens, should you need any support you can reach out to us and we will do our best to resolve any situation that may occur.

GCSE Computer Science Paper 2 Onscreen

Tim Brady

teachingcomputerscience@pearson.com



GCSE Computer Science 2020 Overview

Paper 1


Principles of Computer Science


Paper code: 1CP2/01


✓ 75 marks ⌚ Written examination: 1 hour 30 minutes
⚖️ 50% of the qualification


Content overview


This paper will assess Topics 1 to 5.

 **Computational thinking**
- understanding of what algorithms are, what they are used for and how they work; ability to follow, amend and write algorithms; ability to construct truth tables.

 **Computers** - understanding of hardware and software components of computer systems and characteristics of programming languages.

 **Networks** - understanding of computer networks and network security.

 **Issues and impact** - awareness of emerging trends in computing technologies, and the impact of computing on individuals, society and the environment, including ethical, legal and ownership issues.

 **Data** - understanding of binary, data representation, data storage and compression.

Assessment overview

This paper consists of five compulsory questions, each one focused on one of the topic areas. The questions consist of multiple-choice, short-, medium- and extended-open-response, tabular and diagrammatic items.

Paper 2

Application of Computational Thinking

Paper code: 1CP2/02

✓ 75 marks ⌚ **Practical onscreen examination: 2 hours**
⚖️ 50% of the qualification

Content overview

This paper will assess Topic 6: Problem solving with programming.

The main focus of this paper is:

✓ understanding what algorithms are, what they are used for and how they work in relation to creating programs

✓ understanding how to decompose and analyse problems

✓ ability to read, write, refine and evaluate programs.

Assessment overview

This paper is practical in nature and requires students to design, write, test and refine programs in order to solve problems.

Students will complete this assessment onscreen using their Integrated Development Environment (IDE) of choice.

They will be provided with:

✓ coding files

✓ a hard copy of the question paper

✓ Programming Language Subset (PLS) – as a booklet alongside the question paper and as a PDF document on the student's computer.

Students should then answer the six compulsory questions onscreen using Python 3.

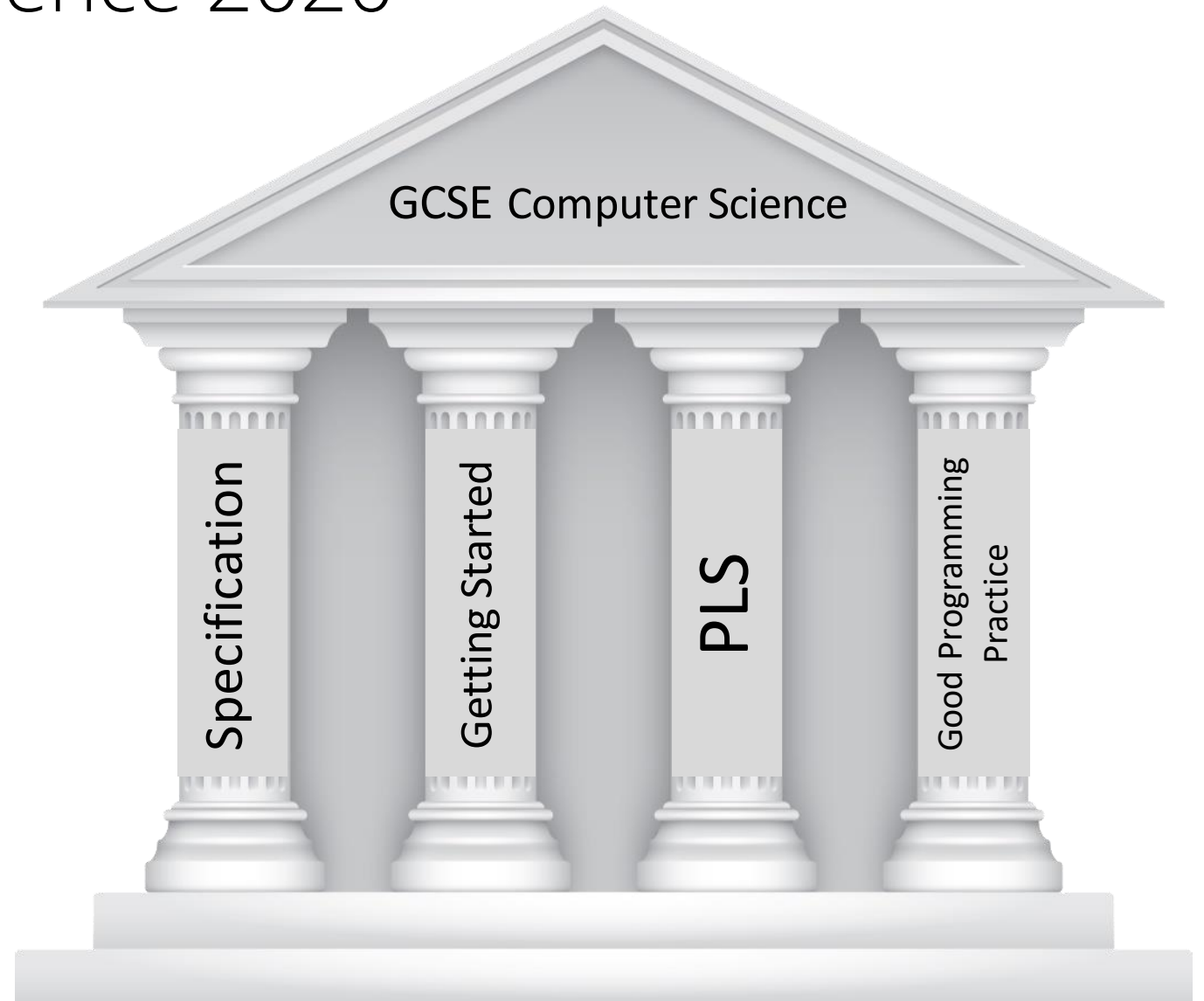
GCSE Computer Science 2020

[Specification](#) –
where it all starts

[PLS](#) – Program
Language Subset,
scopes how much
Python is needed

[Getting Started
Guide](#) – exemplifies
and clarifies all
areas of the content

[Good Programming
Practice Guide](#) –
explains why this is a
computer science
GCSE and not a
Python GCSE



Onscreen assessment for Paper 2



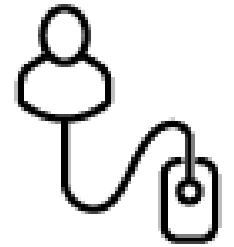
Support

- Subject specific [Instructions for Conducting Examinations \(ICE\)](#)
- [Role specific checklists](#)
- Live support sessions
- FAQs
- Customer engagement team



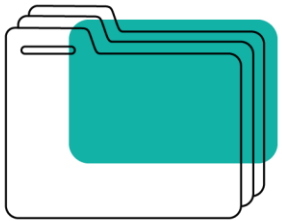
Exam prep

- Creation of secure user areas & folder structure
- EOL account access
- Login details for candidates



Exam day

- Secure download of coding files on the morning of the exam
- Question paper is hard copy
- PLS digital & hard copy
- Upload cohort zip file via LWT



Tim Brady

teachingcomputerscience@pearson.com

[Book an appointment](#)

[Computer Science Facebook group](#)



Register your interest to deliver onscreen by completing [this form](#) and we will be in contact!



Our subject advisors

Our team of subject advisors are experts in their fields, with many of them former teachers. They are here to support you and can help with all your subject-specific queries. You can sign up for your subject advisor updates [here](#).



Business & Economics - Colin Leith

teachingbusiness@pearson.com
teachingeconomics@pearson.com

[Book an appointment](#)



Geography, Islamic Studies & Pakistan Studies - Jon Wolton

teachinggeography@pearson.com

[Book an appointment](#)



English - Clare Haviland

teachingenglish@pearson.com

@PearsonTeachEng

[Book an appointment](#)



History - Mark Battye

teachinghistory@pearson.com

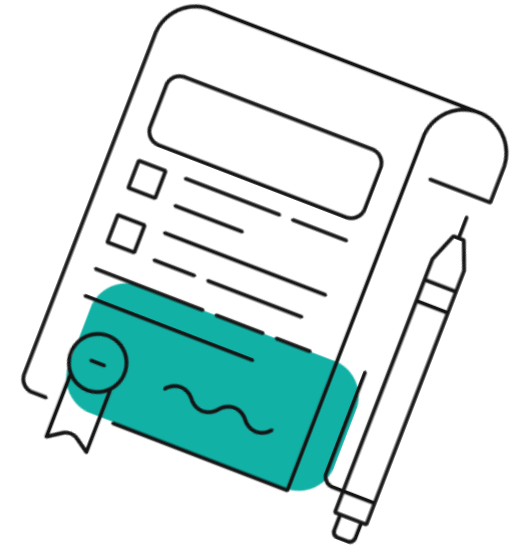
Interested in supporting development of our onscreen assessments?

At Pearson, we believe in creating assessments that encourage progress, enables access and inclusion, and enriches teaching and learning.

To make that happen, we're looking to work with centres during the development of onscreen through teacher and student feedback as well as small trials of the onscreen materials. We'd be looking to carry this out at the end of 2023 and beginning of 2024.

If you are interested in being involved, please complete the relevant subject form and one of our Pearson colleagues will be in contact with you.

- [International GCSE Geography \(4GE1\)](#)
- [International GCSE Islamic Studies \(4IS1\)](#)
- [International GCSE Pakistan Studies \(4PA1\)](#)



Interested in improving the accessibility, inclusivity and usability to enable better student experience?

We would love to speak to as many teachers, SENCOs and as wide a range of students as we can, including those with different abilities, needs & requirements.

This helps us to understand whether improvements we are making to the Assessment Platform work for different groups of students in terms of how they view & interact with those improvements, and any refinements we can make.

If you are happy to contribute to ongoing research and testing, please contact our colleague Emma Crampton at emma.crampton1@pearson.com



FAQs

You can find our FAQs [here](#)

You can also contact us directly via our team inbox:

internationalonscreen@pearson.com

We'd love your feedback

Let us have your feedback by emailing us at: internationalonscreen@pearson.com





Pearson