

Your Year 6 planner - week 2



Welcome to our summer term timetables. Following feedback from you, and our team of working parents, we've simplified these to make them easier to follow and to help fit around your daily schedules. We hope you find them useful to help your children continue learning in a fun way!

- ▶ **Balance your family schedules** - we've suggested core learning of English and maths in the morning but if that's when you need to work, switch it around. Or, balance the day with English in the morning and maths in the afternoon.
- ▶ **Lesson duration**
As a guide we'd expect each lesson to last: Reception: 30 mins; Years 1 and 2: 45 mins and Years 3 to 6: 1 hour.
- ▶ **Build in work from school** - choose what to swap out from the timetable with lessons provided by your child's school. You could even share this timetable with your school to help everyone!

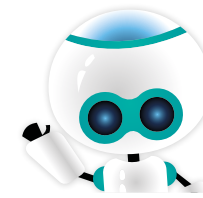
- ▶ **Theme your week** - for fun activities and games outside key learning windows, a theme will help give some focus to creative time!
- ▶ **Establish a routine** - once you've found timings that work, try and stick to it as it will manage expectations and provide security.
- ▶ **Print or draw it out** - so everyone can see it and feel involved.
- ▶ **If it's not working, try again tomorrow** - Although continuing your child's learning is important, we don't expect every child to do every learning activity every day. At this time, we know it's equally important to enjoy time with our children - playing, baking, painting, reading, and sometimes just enjoying doing nothing!

Tips for linking to ActiveLearn Primary

You should have received login details for ActiveLearn Primary to access our Bug Club reading and Abacus maths games. You will find all this fantastic content in My Stuff. (Completed books and practice games will move through to My Library). Go to the 'grown-ups' area for help and advice.

If you haven't received your login details or need help, please **contact our UK based customer support team.**

Your Year 6 Planner



Monday

Tuesday

Wednesday

Thursday

Friday

Morning exercise

Morning
Maths

Try this White Rose Maths activity about **angles in special quadrilaterals (Lesson 1)**.
Try this activity from NRICH all about **drawing shapes** from the clues given.

This is an activity from White Rose Maths all about **angles in regular polygons (Lesson 2)**.
Have a go at Abacus Homework Sheet 6.15. Just open **ActiveLearn Primary** and go to My Stuff.

This activity from White Rose Maths is all about **problem solving (Lesson 3)**.
Use your problem solving skills to tackle this NRICH activity: **Plenty of Pens**.

Here is another activity from White Rose Maths all about **problem solving (Lesson 4)**.
Use your problem solving skills to try this NRICH activity: **Would You Rather?**

Finish the week off with the **Friday Maths Challenge** from White Rose Maths and BBC Bitesize.

Break time

Morning
English

Go to **ActiveLearn Primary** (using the login details we have sent you) and read or listen to Chapter 1 of *Beyond the Horizon*.
Answer the **comprehension questions** and complete the **activity sheet**.
Then go to **ActiveLearn Primary** and open the **Grammar and Spelling Bug Silent Letters** game. Watch the video and play the games.

Go to **ActiveLearn Primary** (using the login details we have sent you) and read or listen to Chapter 2 of *Beyond the Horizon*.
Answer the **comprehension questions** and complete the **activity sheet**.
Then go to **ActiveLearn Primary** and open the **Grammar and Spelling Bug Bullet Points** game. Watch the video and play the games.

Go to **ActiveLearn Primary** (using the login details we have sent you) and read or listen to Chapter 3 of *Beyond the Horizon*.
Answer the **comprehension questions** and complete the **activity sheet**.
Then go to **ActiveLearn Primary** and open the **Grammar and Spelling Bug Colons, Semicolons and Dashes** game. Watch the video and play the games.

Go to **ActiveLearn Primary** (using the login details we have sent you) and read or listen to Chapter 4 of *Beyond the Horizon*.
Answer the **comprehension questions** and complete the **activity sheet**.
Then go to **ActiveLearn Primary** and open the **Grammar and Spelling Bug Relative Clauses** game. Watch the video and play the games.

Go to **ActiveLearn Primary** (using the login details we have sent you) and read or listen to Chapter 5 of *Beyond the Horizon*.
Answer the **comprehension questions**.
Go to **ActiveLearn Primary** and re-visit the **Grammar and Spelling Bug Relative Clauses** game.
Complete the **Relative Clauses (people) activity sheets**. Note that the activity sheets use scaffolded practice to help children increase in confidence. As the activity progresses, the questions increase in difficulty. Only complete as much as you feel able to, but if in doubt, have a go!
Answers provided at the back.

Lunch time

Afternoon
Take your pick from these other activities!

Computational Thinking
(Computing unit)

Evolution & Inheritance
(Science unit)

Industrial Revolution
(History unit)

What is notation?
(Music video and activity)

What is adaptation?
(Science video and activity)