

# Modular International GCSEs

Modern qualifications for globally  
minded students



Pearson

# Contents

- 1 Welcome to Pearson Edexcel
- 2 iProgress
- 3 About Pearson International GCSE
- 4 Progression and recognition
- 5 **NEW** for International GCSE
- 6 **NEW** Modular approach
- 7 Becoming a Pearson partner



# Welcome to Pearson Edexcel

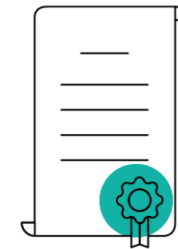
- We are the world's leading learning company and as the **UK's largest awarding organisation**, best placed to provide qualifications aligned to the British educational system.
- Our international **heritage stretches back over 150 years**.
- Today, we partner with schools, universities and employers worldwide, offering world-class, globally-recognised qualifications to over **3.5 million students a year**.



**Pearson  
Edexcel**



Trusted and recognized qualifications partner to **6,500** schools, colleges and employers globally



We mark over **10 million** exam scripts on behalf of the UK Department for Education each year



We operate in **70 countries** worldwide

# The benefits of partnering with Pearson Edexcel

We lead the way in digital teaching, learning and assessment

- Online schooling expertise spanning 20+ years.
- Onscreen assessment capabilities.
- 25,000 educators accessed our digital learning resources in 2020.

Our globally recognised modular qualifications protect learners in times of uncertainty

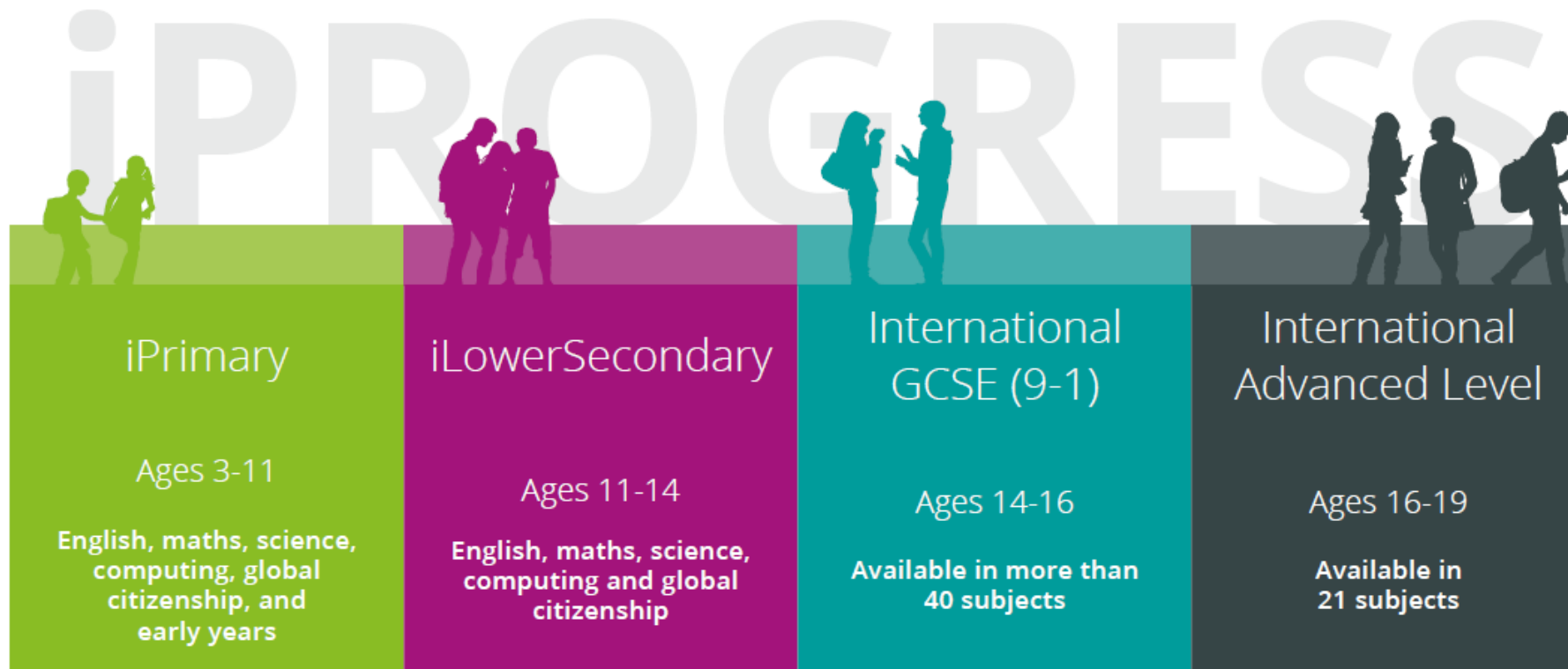
- Bank ongoing evidence of performance.
- Multiple exam opportunities throughout the year.
- Proven university progression.
- Comparability with GCE AS/A Level.

We are more than an awarding organisation

- Career-based BTEC qualifications.
- English language learning resources and testing.
- Learner research and professional developments.

# Modern, progressive qualifications

Pearson Edexcel International GCSEs are part of iProgress, our complete series of academic qualifications for 3- to 19-year-old learners at international schools following a UK curriculum. At every stage, our iProgress continuum delivers a consistent learning journey with world class support, assessments and teaching and learning resources for students and teachers, everywhere in the world.



IAL is a registered trademark of Pearson Education Ltd in the UK and other countries.

# About International GCSEs

What our partner schools love about Pearson Edexcel International GCSEs



## That they're designed for international students

We continually review our specifications, adding international topics and examples using local contexts where possible, to ensure the content of our qualifications is ever more relevant and engaging for students around the world.



## They're on the more valuable 9-1 grading scale

Our International GCSEs follow a 9-point grading scale (9-1), introduced by the UK government in 2014 to raise standards and differentiate top-performing students. A 9 represents a higher level of attainment than an old grade A.



## Our unrivalled support, resources and tools

We provide a full range of integrated support services, tools and resources to help with the delivery of our Pearson Edexcel International GCSEs, including teacher training, pre-exam support and our post-results services.



## The transferable skills integrated throughout

Problem solving, critical thinking, leadership and collaboration skills are integrated into all Pearson Edexcel International GCSE qualifications to ensure learners have the skills and knowledge they need to progress.

# Progression and recognition



## Global recognition

Pearson Edexcel International GCSE and International A level qualifications are most closely aligned to the British education system and are accepted for entry to undergraduate programmes by more than 650 leading universities worldwide.



## Seamless progression

Pearson Edexcel International GCSE qualifications are excellent preparation for International A levels.

All higher education institutions that recognise UK GCE A Levels also recognise Pearson Edexcel International A levels.



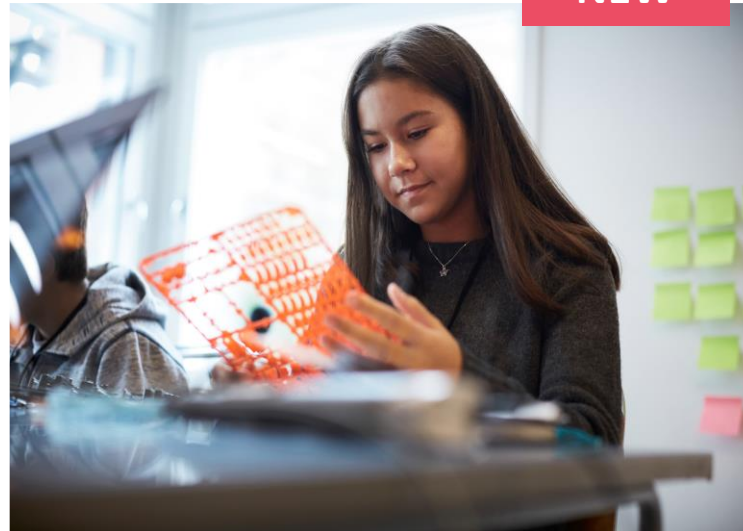
## Future career success

With our globally recognised Pearson Edexcel International qualifications, you can be sure that you are preparing your students in the best way possible for their future career success with the qualifications, skills and knowledge that admissions teams and employers are looking for.

# NEW for Pearson Edexcel International GCSE



A choice of  
paper-based or  
onscreen assessment



A choice of  
linear or  
modular assessment



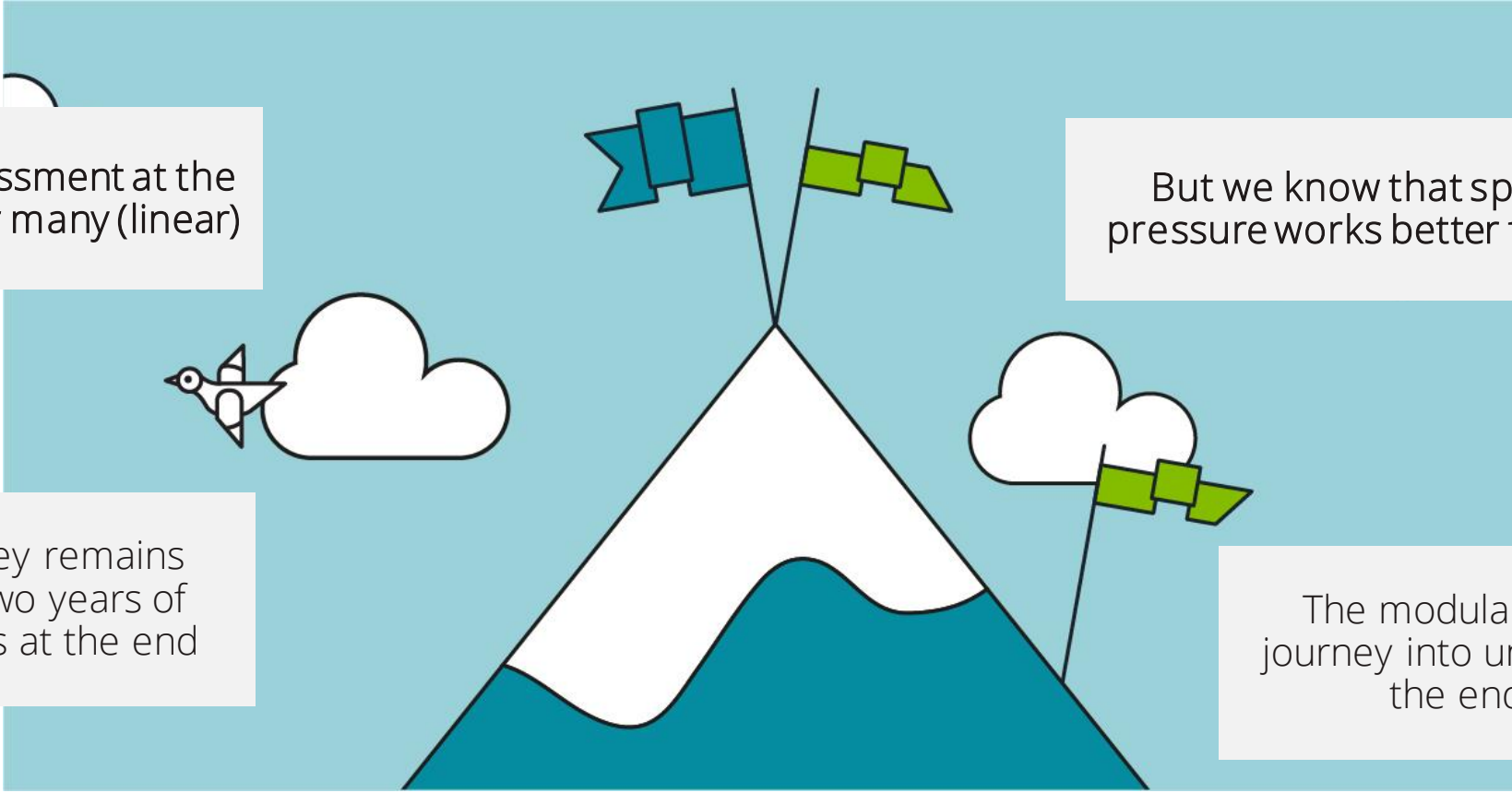
More choice of  
support with  
Teaching Hubs

Pearson Edexcel is the only awarding organisation to offer onscreen assessment and modular assessment for International GCSE



# Why a choice of linear or modular assessment?

The secret of International GCSE success is different for every student.



Doing all the assessment at the end works well for many (linear)

But we know that spreading the exam pressure works better for others (modular)

The linear journey remains exactly as it is, two years of study with exams at the end

The modular route breaks the journey into units, with an exam at the end of each unit

Whichever route you choose, the exams take the same amount of time, teachers spend the same amount of time teaching, and everyone has the best chance of success at international GCSE.

# The benefits of a modular approach

## Students



- ✓ Reduces students' mental load and stress by allowing them to focus on one year of curriculum at a time and spreads out their exams over 2 years.
- ✓ Provides more opportunities to demonstrate their skills and abilities and optimise feedback to improve their performance.
- ✓ Allows them to take exams when they're ready, like they do with other tests, and take advantage of multiple re-sit opportunities.

## Educators & Parents



- ✓ Provides teachers with rich mid-cycle data on learner performance via post-exam analysis support tools such as Results Plus.
- ✓ Eases the pressures faced by exam officers as it allows international schools to spread the exam admin burden.
- ✓ Where parents pay exam fees, it helps with budgeting by enabling families to spread their child's exam fees over two years.

# Modular or linear: the **choice** is yours

If you're happy with the linear approach, there is no pressure to move to the modular route; our linear International GCSEs will continue to be offered and taken widely by students around the world.



## Modular route

---

Unit assessments can be taken over multiple exam series.

Grades are calculated on raw marks which are then converted to a UMS (Uniform Mark Scale).

Students can re-sit individual units in any exam series.

Once a student has all their unit results, they can 'cash in' these results for their grade.

A modular route  
is only offered  
by Pearson  
Edexcel at  
International  
GCSE

## Linear route

---

Assessments for all units are taken together in one exam series.

Grades are calculated on raw marks only.

Students can re-sit assessments for all units together in one exam series.

The grade students receive are calculated at the end of the exam series in which they sat their assessments.



# How the modular route works

## Units can be assessed in any exam series

All units can be treated separately, and they can be taken in any International GCSE exam series.

All exam papers for modular International GCSEs are at the same standard as the exam papers on the linear route.

## No time limits to the qualification

Students can take and re-sit individual unit assessments in any series.

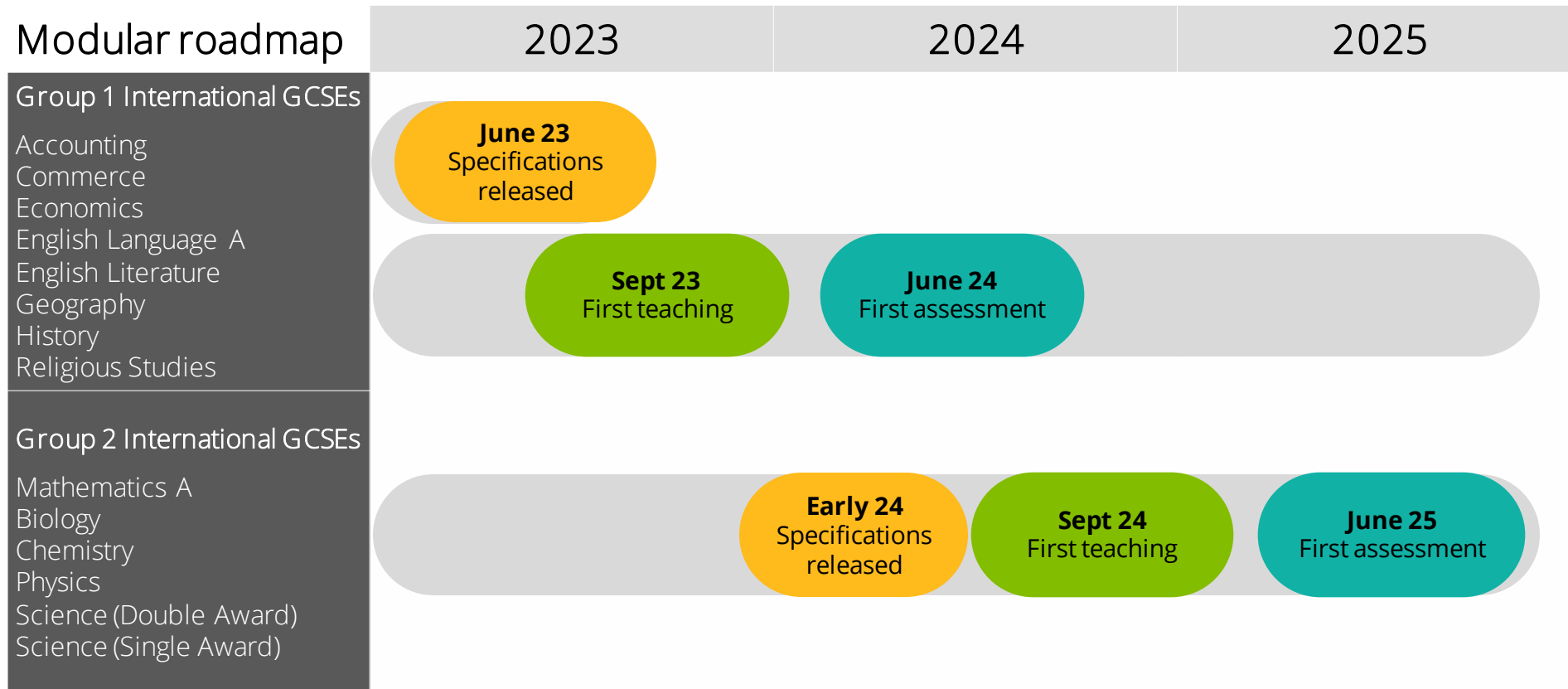
This means students have more opportunities to get feedback to improve their performance and get the grades they need to progress.

## Students 'cash in' unit results when ready

Once a student has all their unit results for the qualification they are taking, they 'exchange' those for a grade – this is called 'cashing in'. To cash in, all units must have been entered.

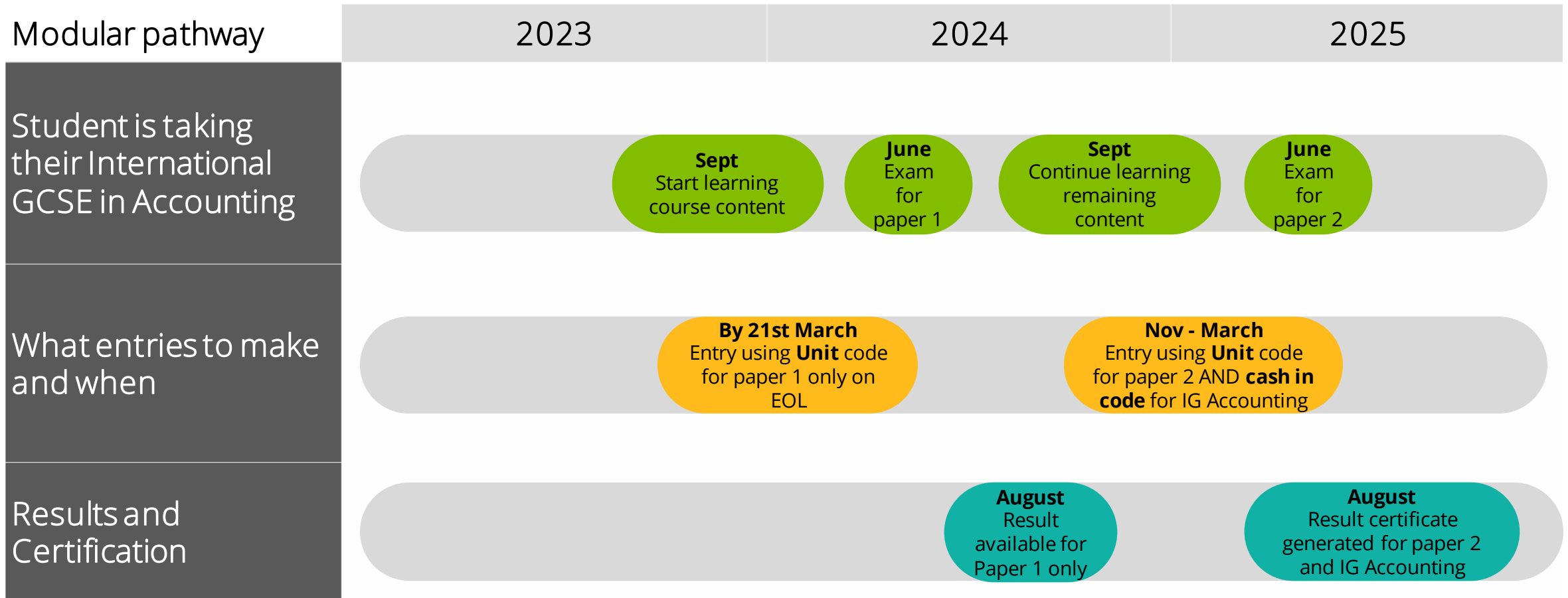


# Which qualifications are available and when?



English as a 2nd Language will have a unitised approach to allow for individual re-takes and follow the same timeline as Group 2.

# Example: A student's modular journey using International GCSE Accounting



# Assessment format by subject

## Subjects (A to F)

- Accounting ●●●\*
- Arabic (First Language) ●●
- Art and Design ●
- Bangla ●●
- Bangladesh Studies ●
- Biology ●●●^
- Business ●●●^●^
- Chemistry ●●●^
- Chinese ●●
- Commerce ●●●\*
- Computer Science ●
- Economics ●●●\*●^
- English Language A ●●●\*●\*
- English Language B ●●
- English Literature ●●●\*●\*
- English as a Second Language ●●●^
- French ●●
- Further Pure Mathematics ●●

## Subjects (G-Z)

- Geography ●●●\*●+
- Global Citizenship ●
- German ●
- Greek as a First Language) ●
- History ●●●\*●^
- Human Biology ●●●^
- Information and Communication Technology ●●
- Islamic Studies ●●+
- Mathematics A ●●●^
- Mathematics B ●●
- Pakistan Studies ●●+
- Physics ●●●^
- Religious Studies ●●\*
- Science Double Award ●●●^
- Science Single Award ●●^
- Sinhala ●
- Spanish ●
- Swahili ●
- Tamil ●

## Exam timing and format

- May/June exam series (all subjects)
- November exam series
- \* Modular assessment first assessment June 2024 (group 1)
- ^ Modular assessment first assessment June 2025 (group 2)
- See appendices for more detailed modular roadmap**
- \* Onscreen assessment, available now
- ^ Onscreen assessment, first assessment June 2024
- + Onscreen assessment, first assessment June 2025

# The feedback from educators so far

(Having this) choice would give us the opportunity to give every child access to education and create the best chance of success.

Educator, Kenya

Repeating one particular paper instead of two papers will make it easier for students to achieve better grades.

Educator, Bangladesh

(A benefit would be) banking learning in Year 1 for the transient student population.

Educator, Spain

(Providing students with the opportunity to take) earlier modules will help indicate accuracy of predictions.

Educator, Singapore

The flexibility is more suited to the type of students we have at the school.

Educator, Saudi Arabia

With increased inflation in the country, this option offers financial relief for parents.

Educator, Pakistan



# Becoming a Pearson partner is easy

**As a Pearson Edexcel centre, we'll support you every step of the way.**

You will have access to a full range of integrated support services, tools and resources to support the delivery of your modular International GCSEs from teaching and learning, exam delivery, to post results services.

Local regional consultants who will work closely with you to help you deliver your vision.



# Modular assessments in practice: Pearson Edexcel International A Levels

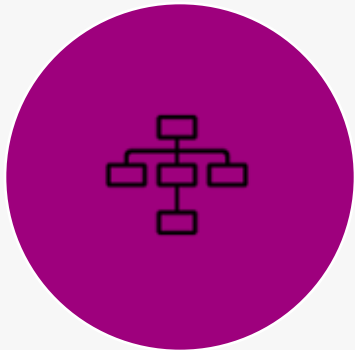
Pearson Edexcel International AS/A levels (IAL®) use the popular and flexible modular approach\* already.

Exams are taken at the end of each unit of study, or throughout the programme of study when a student feels prepared and ready, or all together at the end the course.

This flexibility, together with IAL exam series in January, June and October, for most subjects, means that students have more opportunities to get feedback to improve their performance and get the grades they need to progress.

- ✓ Students are able to bank robust and ongoing evidence of their performance with the modular approach
- ✓ Multiple exam opportunities throughout the year
- ✓ IALs® open the doors to the world's best universities
- ✓ They enjoy comparability with UK GCE AS/A levels
- ✓ Like our International GCSE qualifications, they are designed for international students
- ✓ And also integrate transferable skills throughout to support student progress

# Side-by-side: Modular International A Levels and modular International GCSEs



## Modular International A Levels

Modular route only for International A Levels. Linear route offered by UK GCE A Levels.

Exam series in January, May/June and October each year.

A deliberate step-up in difficulty level between IAS and IA2 unit assessments so e.g., a subject's IAS Paper taken at the end of Y12 would be easier than the IA2 Paper taken at the end of Year 13.

Modular qualifications offered by Pearson Edexcel

## Modular International GCSEs

Modular route is an option alongside the linear route for International GCSEs.

Exam series in May/June and November.

All exam papers for modular International GCSEs are at the same standard as the exam papers on the linear route.



**"We have made the decision to switch to Pearson Edexcel International GCSEs for a number of reasons"**

"Firstly the support from the team here in Sri Lanka is second to none. Secondly, during Covid, the decision-making by Pearson Edexcel globally was clear and made early, which enabled us to respond in good time and to communicate clearly with parents. Thirdly, we feel that the exams and the exam style is more child friendly than some of the rival examination boards.

The support we have had from Pearson Edexcel in our early stages of the switch has been great and we don't regret it at all."

Principal, Stafford International School,  
Sri Lanka



# I'm interested! What do I do next?



Visit our website

Want to know more about our International GCSE? [Visit our website](#) to find our specifications and sample materials to help you understand the structure and content of each of our qualifications.



Stay in touch

Interested in the modular route but not ready to move any subjects yet? That's fine! Fill in this [expression of interest form](#) and we will keep you updated until you're ready.



Contact our local team

If you are an existing Pearson Edexcel school and you would like to switch one of your subjects to the modular route, [contact your local Pearson representative](#) to help you make the move.



Start your switch

If you are not yet with Pearson Edexcel and you would like to switch one of your subjects to the modular route, complete our [expression of interest form](#) and we'll be in touch to get the process started!



Pearson