

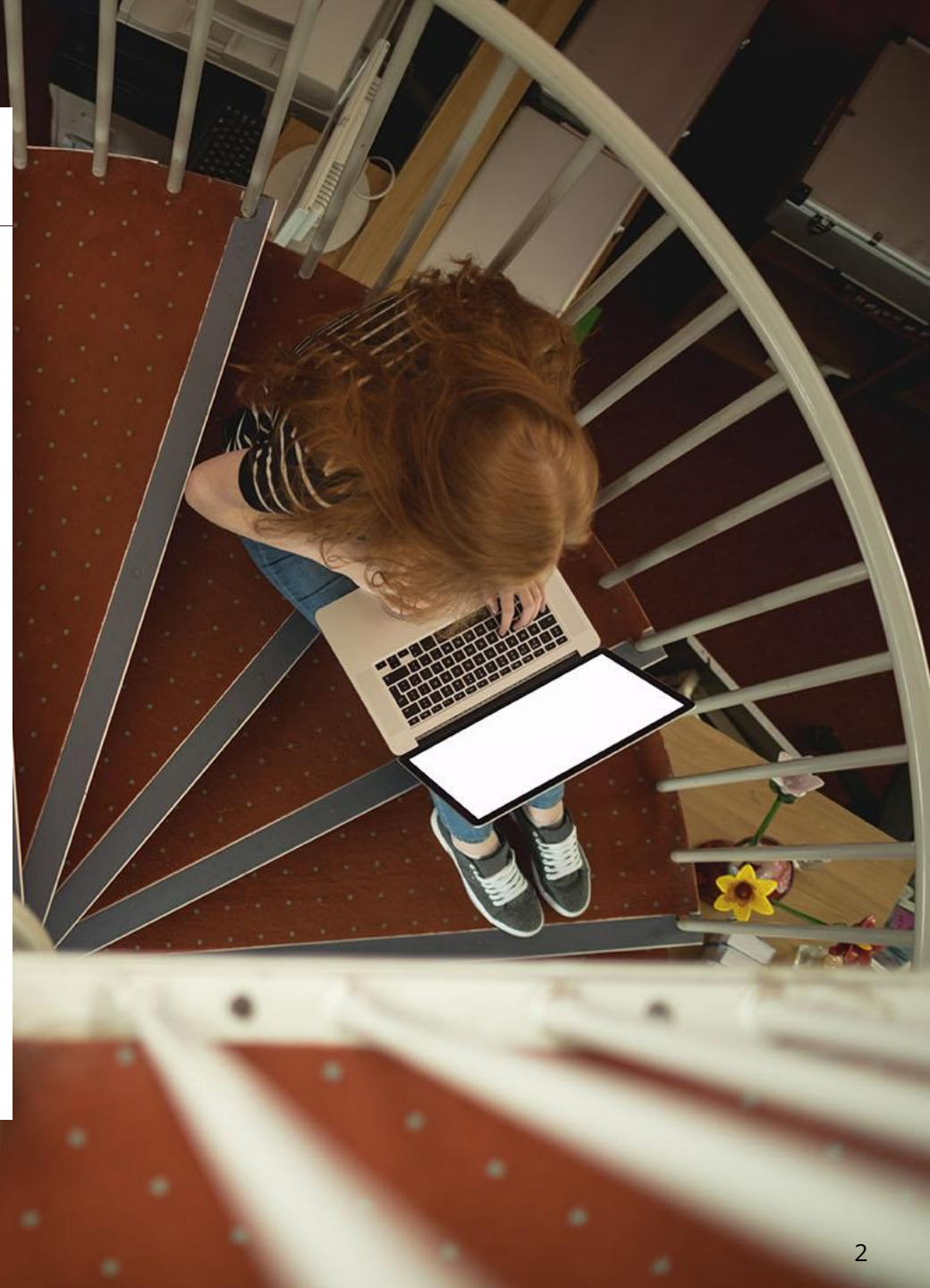
Onscreen Assessment

Ask us anything!



A Quick Housekeeping Briefing

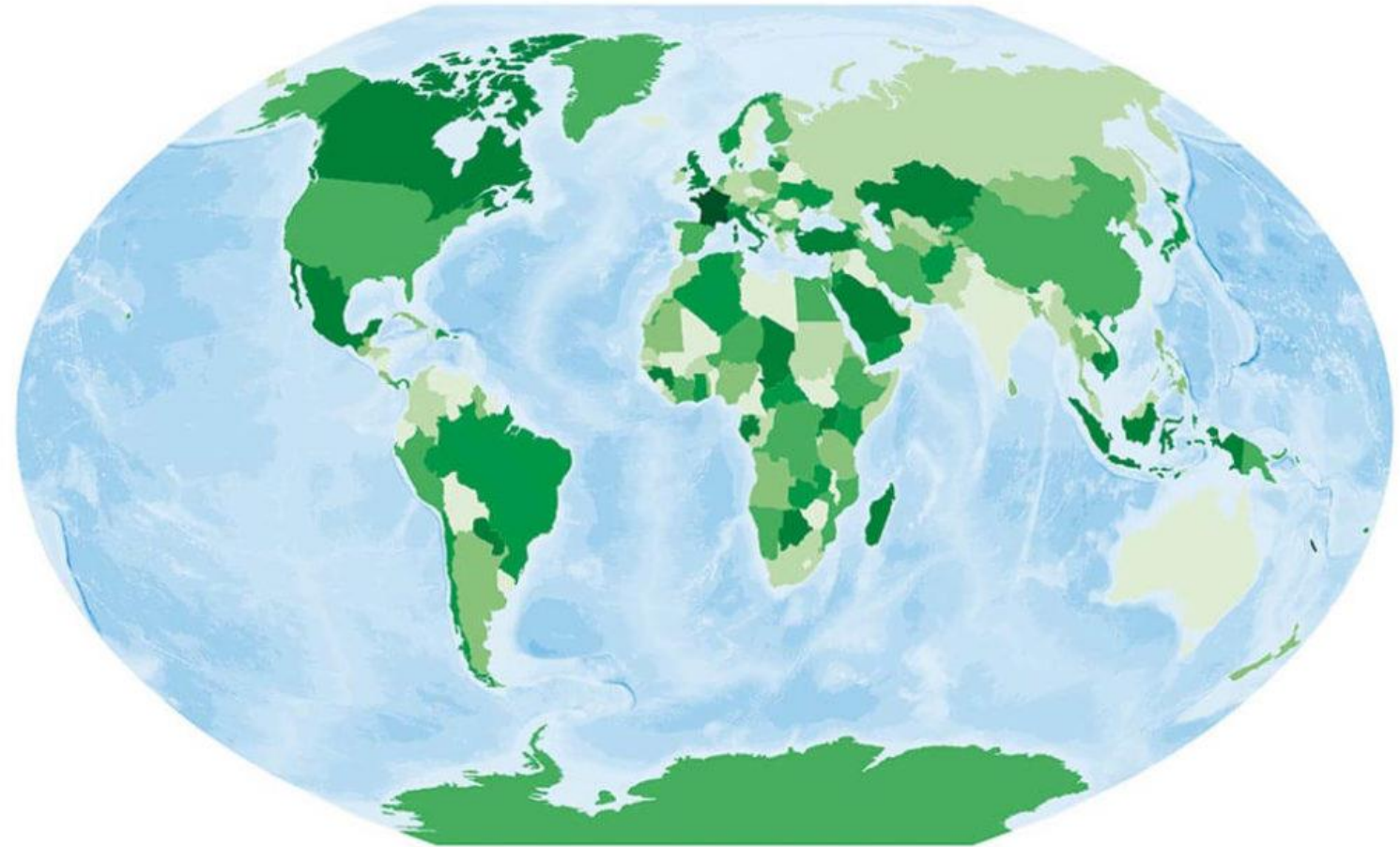
- To help keep background noise to a minimum, your microphone and webcam are automatically disabled.
- You can communicate with us via the **chat box** for introduction and technical assistance and use the Q&A box for questions about the content of the presentation.
- There will be time for **Q&A** at the end of each session
- We will appreciate your input by filling in the **survey form**.
- This session is being **recorded** and will be available for to view again on demand.





Pearson

Poll:
Where are you?



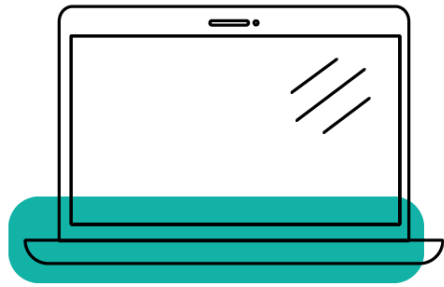
A quick introduction

The story so far

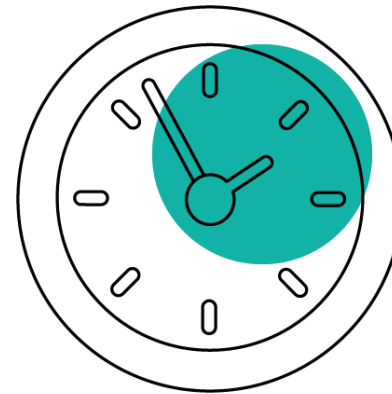


Why are we looking to the future?

Out of 1,000 UK teachers and school leaders and more than 120 International school leaders we surveyed in early 2021:



51% said they would be interested in **adopting onscreen assessment now** if it was available in their subject area



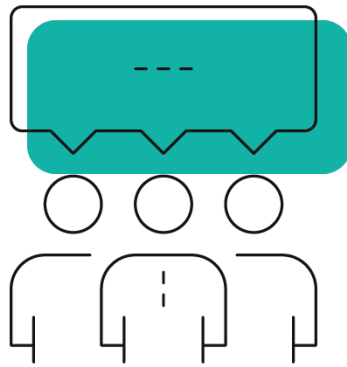
65% said they would be interested in adopting onscreen assessment **within 1-4 years**

We believe in onscreen assessments that...



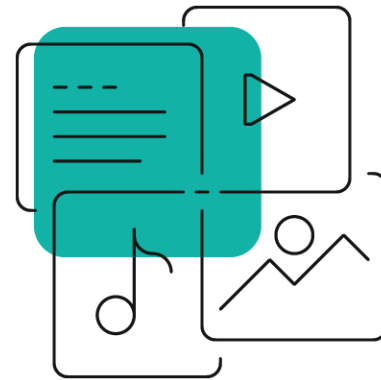
Encourage progress

+



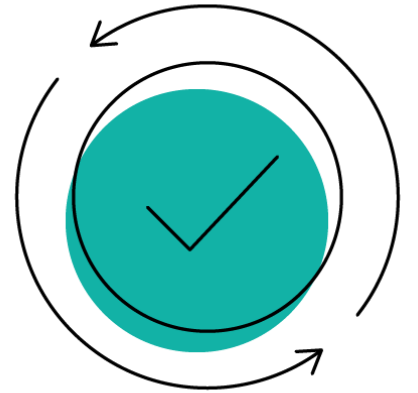
Enable access
and inclusion

+



Enrich learning

=

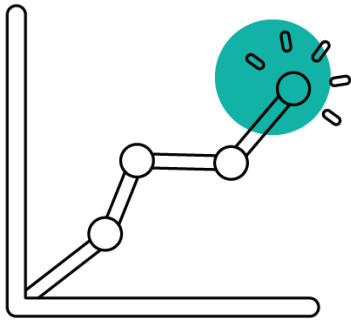


Positively impact
exam experiences
and lives

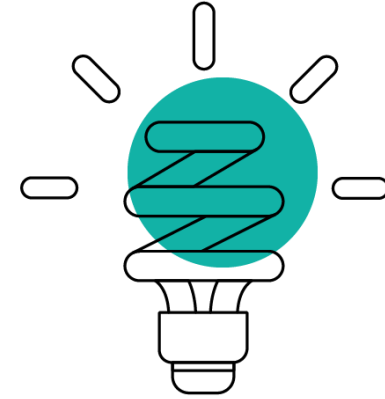
To embrace opportunities



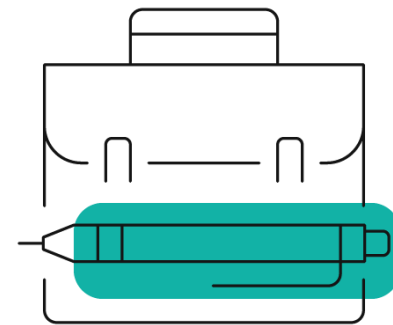
Authentic, future-readying experiences



Actionable insights and data

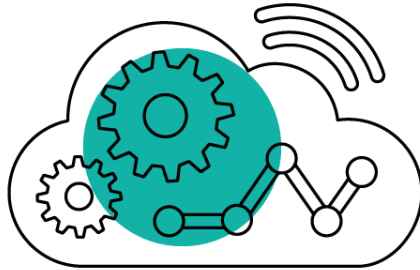


Flexibility and efficiency

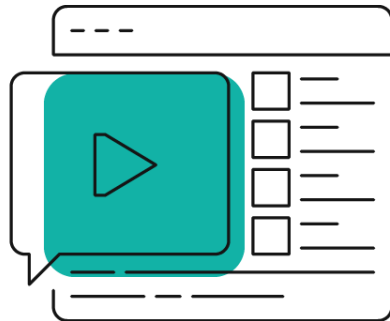


Reducing admin burden

What are we drawing upon?



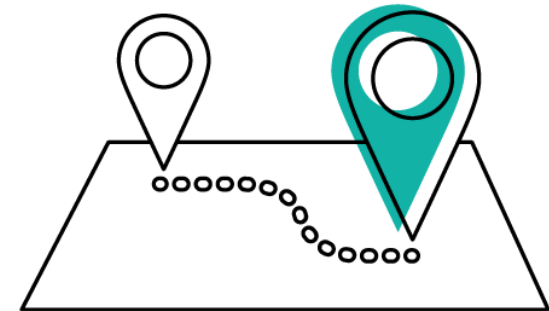
10+ years experience



Millions of onscreen
assessments each year



115+ countries



Various ages and
stages of learning



Blazing a trail

In May 2022, six schools sat English Language A exams onscreen:

- The British School Al Khubairat (BSAK), Abu Dhabi
- Al Yasmina Academy, Abu Dhabi,
- King's College La Moraleja, British School of Madrid
- The British School of Bahrain
- Qatar International School (QIS),
- Doha College in Doha

All six worked closely with Pearson Edexcel to develop the exam platform.

A total of **600 students** took the exams onscreen, having prepared for their exams using our onscreen mocks.

Poll:
Have you
used our
mocks
service?



The set up

Our technical requirements



What's needed

Onscreen assessment is a highly secure, browser-based system. It is compatible and tested with multiple browsers and operating systems. No additional install is required if only using the assessment player and related functionality.

OS/ Browser	Chrome	Firefox Latest Stable	Safari 10,11,12,13	IE 11	Edge Latest Stable
Windows	✓	✓	✗	✓	✓
MAC OS	✓	✗	✓	✗	✗
iOS	✓	✗	✓	✗	✗
Android	✓	✓	✗	✗	✗
Chrome OS	✓	✗	✗	✗	✗

Support in getting set up

TECHNOLOGY

Step-by-step instructions will be shared with your centre on how to install the secure browser closer to the live assessment and whilst this is not a requirement for the mocks, we do recommend trialing the secure browser in at least one of your mock sessions so that you have experience of the set up prior to exam day.

Once installed, a **Safe Exam Browser** icon will appear on the desktop and there is a test procedure that your centre can then carry out ensuring that the installation has been successful. (Details of this will also be shared.)

During the assessment, if the internet connection is lost, the test can still be completed, and it will be uploaded when the connection is restored



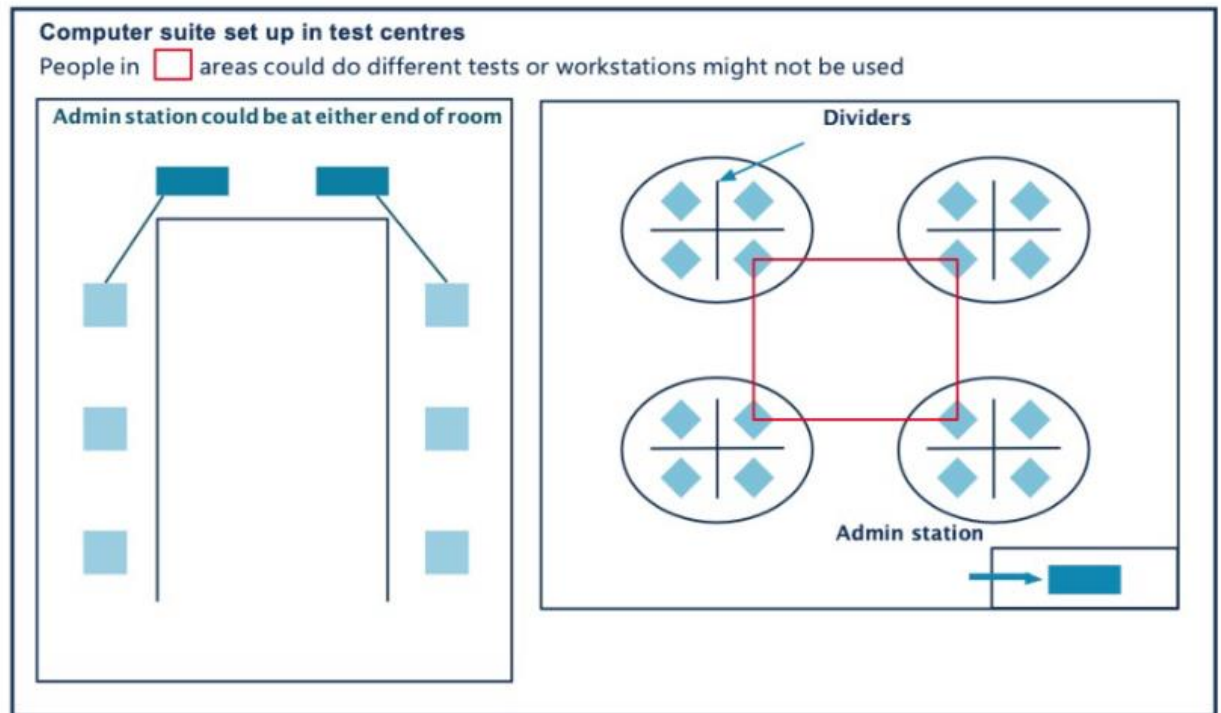
Support in getting set up

ROOM LAYOUT

When planning the layout of the room, the principal objective is to ensure that no candidate's work can be seen by other candidates.

Considerations:

- a) the **distance** between screens - each workstation must be isolated by a **minimum** space of 1.25m (unless monitors are positioned back-to-back or separated by dividers or protected by privacy screens)
- b) the **division** of the workspace to allow any permitted additional materials to be used;
- c) the **use** of booths, screens or partitions, whether temporary or permanent;
- d) impact on **invigilation requirements**;
- e) **ratio** of invigilators.



Support in getting set up

INVIGILATION

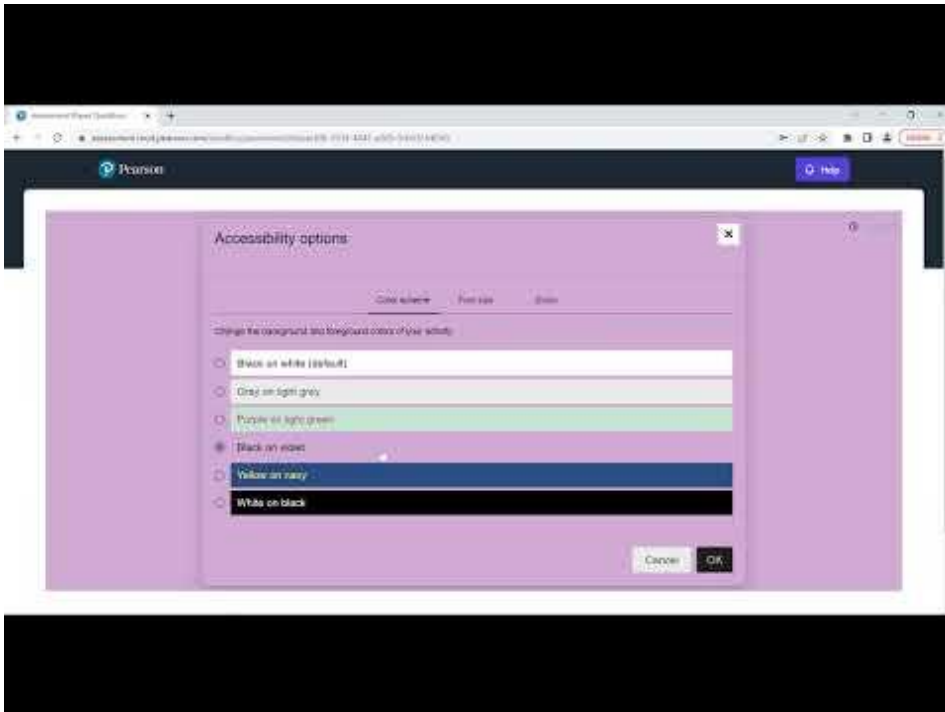
For each onscreen exam, there will need to be a **Lead Invigilator**. It is also recommended that there is a **Specialist Invigilator** (can also be the Lead Invigilator).

There must be **at least one** invigilator for each **group of 20** or fewer candidates taking onscreen exams (this will be dependent on the nature of the exam and the layout of the room).

If there is only one invigilator present, they must be able to summon assistance easily, without leaving the room and without disturbing the candidates.



Support in getting set up



ONSCREEN MOCK SERVICE

All schools adopting the onscreen assessment delivery for International GCSE English Language A (4EA1) and/or English Literature (4ET1) will get **one free mock** exam per student for the first year that the centre delivers the onscreen assessment for. This includes the marking of the mock being carried out by our expert marking team and results being made available through our [Results Plus](#) platform.

Should you decide to enter students for further onscreen mocks in this first year, or in following years, this will be a paid-for service.

You can access our Sample Assessment Materials using [Sandbox](#) so that your teachers and students can try out the onscreen platform experience.

Introducing our trailblazing schools



Over to our pilot schools



King's College School
The British School of Madrid

La Moraleja



Ask Us Anything!

Use the Q&A box and we'll
answer as many as we can

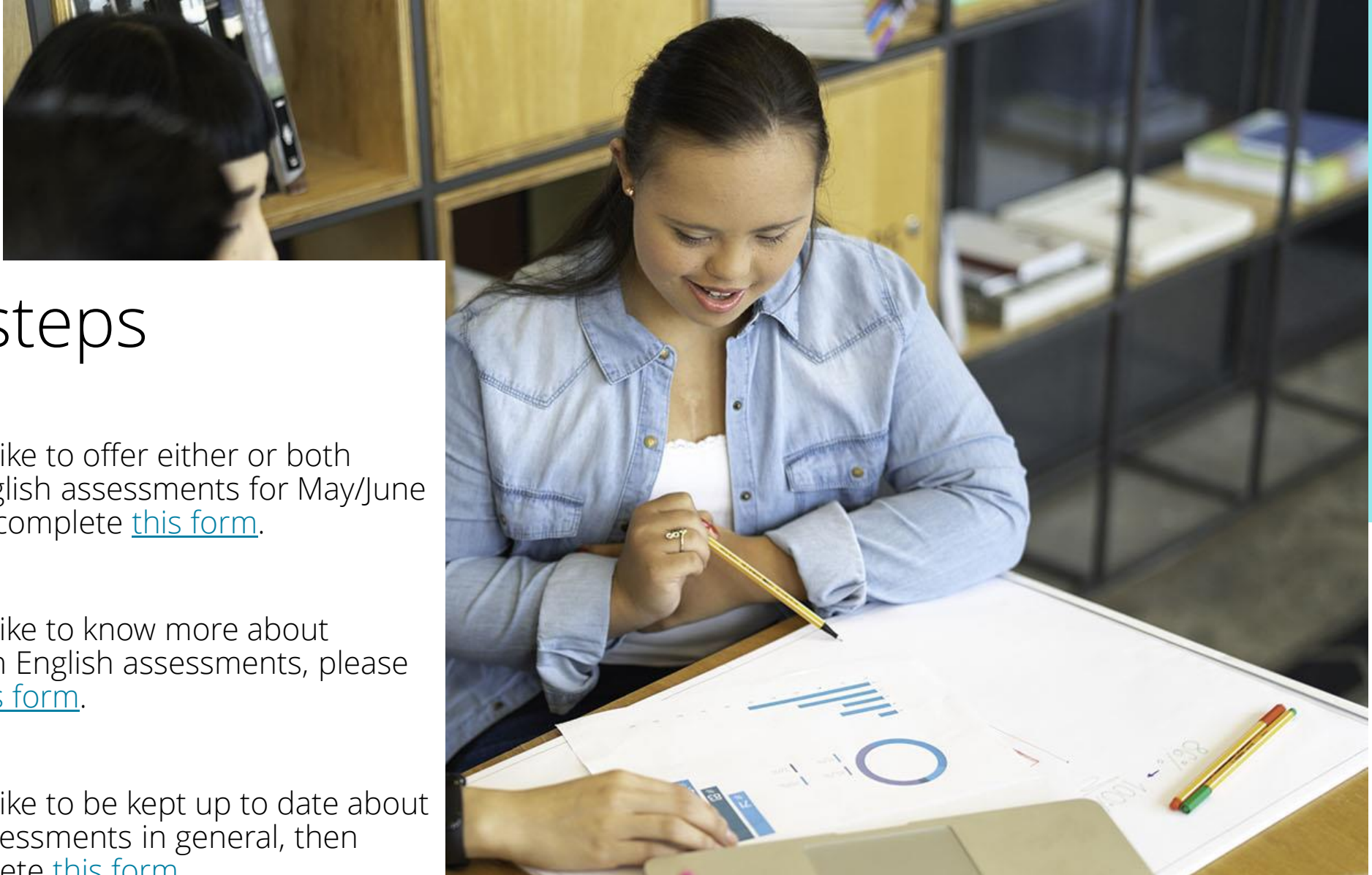


Next steps

If you would like to offer either or both onscreen English assessments for May/June 2023 please complete [this form](#).

If you would like to know more about the onscreen English assessments, please complete [this form](#).

If you would like to be kept up to date about onscreen assessments in general, then please complete [this form](#).





Pearson