

Accurate

With a 0.99 correlation, Versant test scores generated by the Versant testing system are virtually indistinguishable from expert human scoring, ensuring confidence in the results.



Reliable

The Versant English Placement Test is highly reliable (split-half reliability of 0.96), delivering more consistent testing without the variability typical of multiple evaluators and locations.



Fast

Versant is fully automated and can be easily taken over a computer by large groups of candidates. A detailed score report is available minutes after the test is completed.

Versant English Placement Test

The Versant™ English Placement Test is an English proficiency test which measures the English speaking and writing skills of individuals whose native language is not English. Universities, private language schools, and corporate training programs around the world use the test to evaluate the ability of students and staff to understand and communicate clearly in English.

The Versant English Placement Test takes only 50 minutes and results are available online within minutes after the test is completed, allowing for quick, yet accurate placement decisions. Test questions reflect many different situations in the classroom and real world including reading aloud, conversations, dictations, summarizations, and email correspondence. Versant English Placement Tests can be taken on a computer either in online (web browser) or offline (computer software) mode.

Sophisticated Automated Scoring Technology

With the state-of-the-art Versant testing system, tests are scored automatically within minutes. The Versant testing system uses speech processing technology to measure speaking and listening skills. This system was built to handle the different rhythms and varied pronunciations used by native and non-native English speakers. The testing system is able to generate scores based on the words used in the spoken responses, as well as the pace, fluency, and pronunciation of those words in phrases and sentences.

The Knowledge Analysis Technologies (KAT) engine measures written English skills and evaluates the meaning of text by examining whole written passages. The KAT engine is based on Pearson's unique implementation of Latent Semantic Analysis (LSA), an approach that generates semantic similarity of words and passages by analyzing large bodies of relevant text. LSA can then "understand" the meaning of text much the same as a human reader.

Versant English Placement Test Features

Purpose

- Course Placement
- Progress Monitoring
- Exit Exam
- Training Programs

Duration of Test

- ~50 minutes

Number of Questions

- 81

Question Types

- Read Aloud
- Repeat
- Sentence Builds
- Conversations
- Typing
- Sentence Completion
- Dictation
- Passage Reconstruction
- Summary & Opinion

Validity and Reliability

- Versant has been extensively field tested and evaluated to verify its validity and reliability.

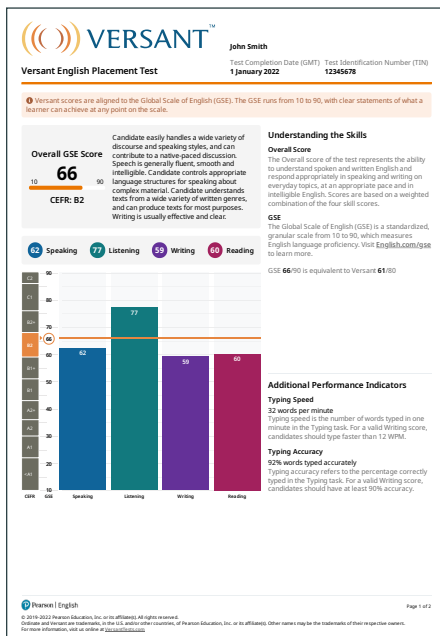
Score

Precise score in the range of 10 to 90

- Overall score
- Diagnostic subscores in speaking, listening, reading, and writing
- Detailed explanation of language capabilities
- Suggestions for improvement
- Typing speed and improvement
- Score mapping to CEFR

Test Security

- Secure capture and storage of candidate responses
- Anonymous test ID numbers to ensure data privacy



The score report is available within minutes and includes the candidate's overall score and subscores, with detailed explanations of language capabilities.

Validity and Reliability

Versant has been extensively field tested and evaluated to verify its validity and reliability. Learn more about the test's validation findings in our detailed *Versant English Placement Test: Test Description and Validation Summary*.

Simple Test Administration - 1, 2, 3, 4

- 1 The test administrator sends the test taker a test invite via the online admin tool, ScoreKeeper.
- 2 The test taker enters their unique test ID on the secure Versant testing site to start the test.
- 3 The test taker answers the test questions and the answers are scored automatically.
- 4 The test administrator retrieves the test taker's detailed score report from ScoreKeeper.

Contact Info

To try a sample test or get more information, contact us at: sales@pearsonkt.com or visit us online at www.VersantTests.com

i Versant scores are aligned to the Global Scale of English (GSE). The GSE runs from 10 to 90, with clear statements of what a learner can achieve at any point on the scale.

Overall GSE Score


Candidate easily handles a wide variety of discourse and speaking styles, and can contribute to a native-paced discussion. Speech is generally fluent, smooth and intelligible. Candidate controls appropriate language structures for speaking about complex material. Candidate understands texts from a wide variety of written genres, and can produce texts for most purposes. Writing is usually effective and clear.

Understanding the Skills
Overall Score

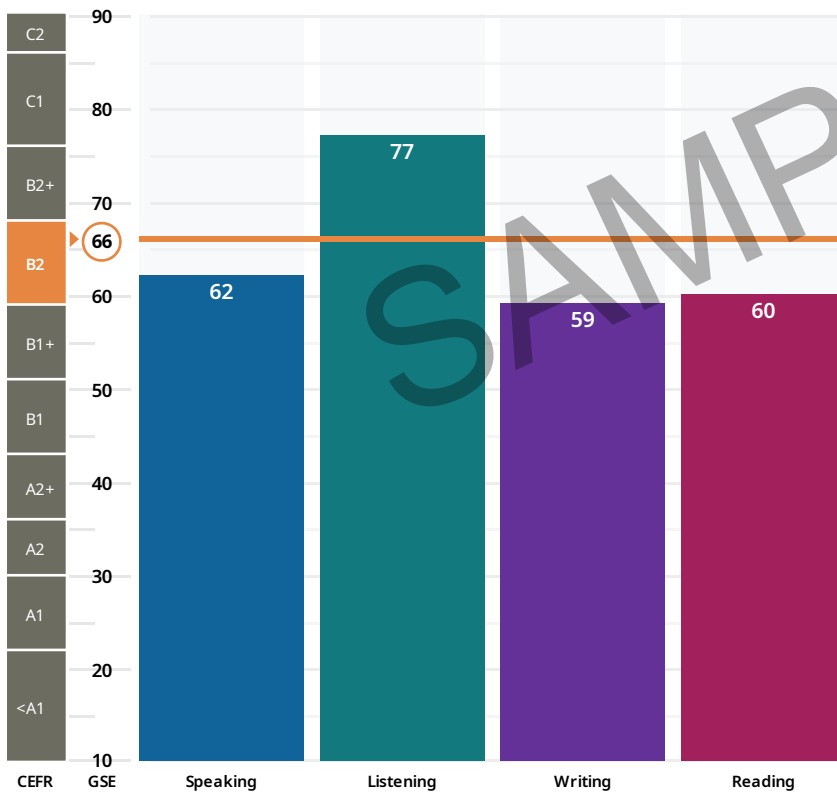
The Overall score of the test represents the ability to understand spoken and written English and respond appropriately in speaking and writing on everyday topics, at an appropriate pace and in intelligible English. Scores are based on a weighted combination of the four skill scores.

GSE

The Global Scale of English (GSE) is a standardized, granular scale from 10 to 90, which measures English language proficiency. Visit [English.com/gse](https://www.english.com/gse) to learn more.

GSE **66/90** is equivalent to Versant **61/80**

62 Speaking **77** Listening **59** Writing **60** Reading


Additional Performance Indicators
Typing Speed

32 words per minute

Typing speed is the number of words typed in one minute in the Typing task. For a valid Writing score, candidates should type faster than 12 WPM.

Typing Accuracy

92% words typed accurately

Typing accuracy refers to the percentage correctly typed in the Typing task. For a valid Writing score, candidates should have at least 90% accuracy.

Current Capabilities in Detail

Speaking: GSE: 62/90

Versant: 59/80 CEFR: B2

Candidate produces a range of meaningful sentences. Candidate speaks with adequate rhythm but with some inappropriate phrasing and pausing. Many vowels and consonants are produced in a clear manner.

🔗 Tips to improve:

- Practice telling a short story about something funny that happened to you, including as many details as you can.
- Practice explaining how to do something, such as making your favorite meal, giving detailed instructions.

Listening: GSE: 77/90

Versant: 69/80 CEFR: C1

Candidate follows most of what is said around him/her on most topics, although occasionally some information may be lost.

🔗 Tips to improve:

- Practice actively listening to spoken language delivered at fast speeds, such as TED Talks.
- Practice listening to complex podcasts and extracting the important details.

Writing: GSE: 59/90

Versant: 57/80 CEFR: B2

Candidate writes clear, connected texts on a variety of subjects using a sufficient range of grammatical structures and a good range of common English words.

🔗 Tips to improve:

- Practice writing detailed descriptions of people and places that you know.
- Practice writing advice that you would give to a friend, including reasons.

Reading: GSE: 60/90

Versant: 58/80 CEFR: B2

Candidate reads, understands and responds to texts on everyday topics at a functional pace. In more complex texts, specific, important details may be lost.

🔗 Tips to improve:

- Practice reading and following the exchanges on a discussion board of a website.
- Practice using an English dictionary to check the meaning of words, rather than a bilingual dictionary.

Understanding the Skills

Speaking

Speaking reflects the ability to produce English phrases and clauses in complete sentences. The score is based on the ability to produce consonants, vowels, and stress in a native-like manner, use accurate syntax, use words appropriately in contexts, and use appropriate rhythm, phrasing, and timing.

Listening

Listening reflects the ability to understand specific details and main ideas from everyday English speech. The score is based on the ability to track meaning and infer the message from English that is spoken at a conversational pace.

Writing

Writing reflects the ability to produce written English texts on everyday topics. The score is based on the ability to present ideas and information in a clear and logical sequence, use a wide range of appropriate words as well as a variety of sentences structures.

Reading

Reading reflects the ability to understand written English texts on everyday topics. The score is based on the ability to operate at functional speeds to extract meaning, infer the message, and respond appropriately.