



### Accurate

With a 0.97 correlation, Versant test scores generated by the Ordinate testing system are virtually indistinguishable from expert human scoring, ensuring confidence in the results.



### Reliable

The Versant English Test is highly reliable (split-half reliability of 0.97), delivering more consistent testing without the variability typical of multiple evaluators and locations.



### Fast

Versant is fully automated and can be easily taken over a phone app or computer by large groups of test takers. A detailed score report is available minutes after the test is completed.

## Versant English Test

The Versant™ English Test, created by leading language testing experts and built on the patented Ordinate® testing system, evaluates the spoken English skills of people whose native language is not English. Corporations, government agencies, and academic institutions throughout the world use Versant English to evaluate the ability of staff, officers, or students to understand spoken English and to communicate clearly and appropriately in English.

### Objectively Test English Speaking Skills

The automated test system produces an overall Versant score based on key dimensions of spoken language performance:



**Sentence Mastery:** The ability to use basic and complex grammatical structures and sentence patterns accurately and appropriately. Scoring focuses on appropriate usage of words, phrases, and clauses in meaningful structures.



**Vocabulary:** The ability to understand, recall, and use common everyday words accurately and appropriately. Scoring focuses on the range of vocabulary and the accuracy of its use at the word, phrase, sentence, and discourse levels.



**Pronunciation:** The ability to articulate vowels and consonants in a native-like manner. Scoring focuses on accurate pronunciation and stress placement at the word and sentence level.



**Fluency:** The ability to maintain smooth speech flow and tempo. Scoring focuses on rate of speaking, the position and length of pauses, rhythm, and phrasing.

# Versant English Test Features

## Purpose

- Recruiting
- Promotion
- Student Placement
- School Admission
- Teacher Credential

## Duration of Test

- ~15 minutes

## Number of Questions

- 63

## Question Types

- Reading
- Repeat
- Short Questions
- Sentence Builds
- Story Retelling
- Open Questions

## Test Security

- Secure capture and storage of candidate responses
- Anonymous test ID numbers to ensure data privacy
- Random test form to prevent cheating

## Score

Precise scores in the range of 10 to 90

- Overall score
- Diagnostic subscores in sentence mastery, vocabulary, fluency, and pronunciation
- Intelligibility Index score
- Suggestions for improvement
- Detailed explanation of language capabilities
- Score mapping to CEFR, TOEIC, TOEFL

## Validity and Reliability

- Versant has been extensively field tested and evaluated to verify its validity and reliability.

## Intelligibility Index Score

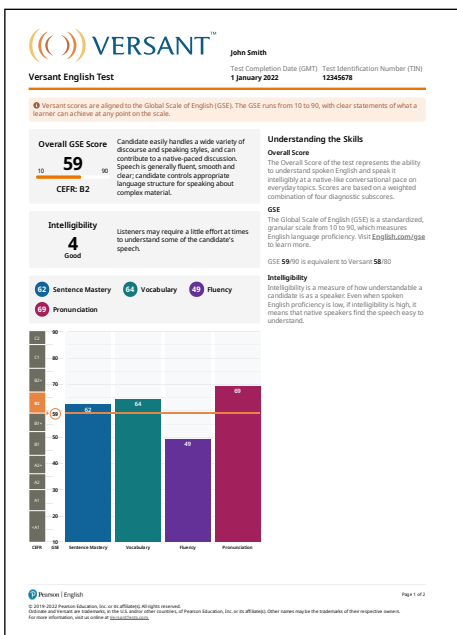
Intelligibility reflects how easy it is to understand what someone is saying. Available exclusively in the Versant English Test score report, this new score measures various parts of a test taker's manner of speaking such as pronunciation, fluency, clarity of expression, and speed of speech.

## Fast Reporting

The score report is available within minutes and includes the test taker's overall score and subscores, with detailed explanations of language capabilities.

## Simple Test Administration - 1, 2, 3, 4

- 1 The test administrator sends the test taker a test invite via the online admin tool, ScoreKeeper.
- 2 The test taker enters their unique test ID on the secure Versant testing website or phone app to start the test.
- 3 The test taker answers the test questions and the answers are scored automatically.
- 4 The test administrator retrieves the test taker's detailed score report from ScoreKeeper.



## Compare the Difference

Conventional Tests	Versant English Test
Questionable consistency	Proven reliability
Limited times, locations	Anytime and anywhere
Results in days or weeks	Results in minutes
Complicated test	Easy administration portal
High cost	Cost effective

## Contact Info

To try a sample test or get more information, contact us at [sales@pearsonkt.com](mailto:sales@pearsonkt.com)  
Or visit us online at [www.VersantTests.com](http://www.VersantTests.com)

**i** Versant scores are aligned to the Global Scale of English (GSE). The GSE runs from 10 to 90, with clear statements of what a learner can achieve at any point on the scale.

**Overall GSE Score**


Candidate easily handles a wide variety of discourse and speaking styles, and can contribute to a native-paced discussion. Speech is generally fluent, smooth and clear; candidate controls appropriate language structure for speaking about complex material.

**Understanding the Skills**
**Overall Score**

The Overall Score of the test represents the ability to understand spoken English and speak it intelligibly at a native-like conversational pace on everyday topics. Scores are based on a weighted combination of four diagnostic subscores.

**GSE**

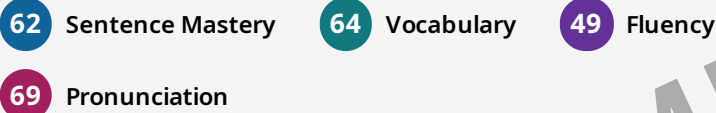
The Global Scale of English (GSE) is a standardized, granular scale from 10 to 90, which measures English language proficiency. Visit [English.com/gse](https://www.english.com/gse) to learn more.

GSE **59/90** is equivalent to Versant **58/80**

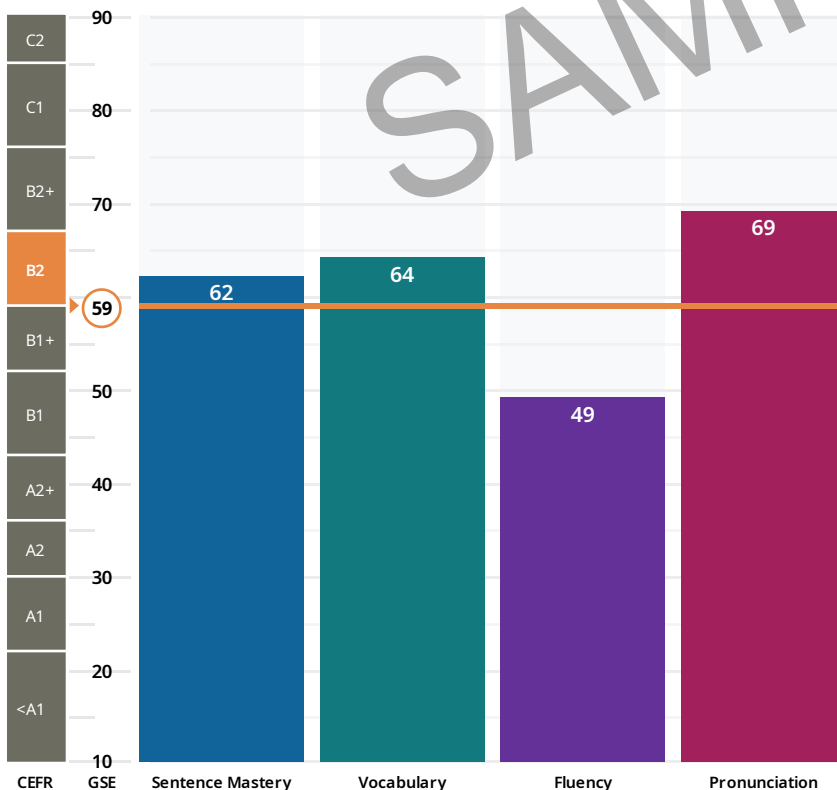
**Intelligibility**

**4**  
Good

Listeners may require a little effort at times to understand some of the candidate's speech.


**Intelligibility**

Intelligibility is a measure of how understandable a candidate is as a speaker. Even when spoken English proficiency is low, if intelligibility is high, it means that native speakers find the speech easy to understand.



## Current Capabilities in Detail

### Sentence Mastery: **GSE: 62/90**

Versant: **60/80** CEFR: **B2**

Candidate can understand, recall and produce a variety of English phrases and clauses in sentence context. Candidate generally produces accurate and meaningful sentences.

#### 🔗 Tips to improve:

- Practice describing your educational history using the correct tense (e.g., present perfect, past perfect, past continuous, etc.).
- Practice rephrasing passive sentences into active sentences.

### Vocabulary: **GSE: 64/90**

Versant: **61/80** CEFR: **B2**

Candidate generally understands and can produce most everyday English words as they are used in clear colloquial speech.

#### 🔗 Tips to improve:

- Verbally summarize the main points of a podcast you listened to, using vocabulary from the podcast.
- Practice telling a well-known story from your culture in English, looking up how to translate any unknown words.

### Fluency: **GSE: 49/90**

Versant: **51/80** CEFR: **B1**

Candidate speaks with adequate rhythm but with some inappropriate phrasing and pausing. Hesitations and possible repetitions or false starts may sometimes interfere with the smooth flow of speech.

#### 🔗 Tips to improve:

- Practice speaking for a full two minutes without stopping. If you get stuck on a word, try expressing your idea in a different way.
- Listen to short videos of native speakers of English. Try repeating what they say, imitating the pace and the location of pauses.

### Pronunciation: **GSE: 69/90**

Versant: **64/80** CEFR: **B2+**

Candidate produces most vowels and consonants in a clear manner, although an occasional mispronunciation may occur. Stress is placed correctly in most common words.

#### 🔗 Tips to improve:

- Look up commonly mispronounced words in English and learn how to say them correctly.
- Listen to a video clip of a native English speaker. Pause the video after each sentence and repeat it exactly, imitating the speaker's rhythm.

## Understanding the Skills

### Sentence Mastery

Sentence Mastery reflects the ability to understand, recall and produce English phrases and clauses in complete sentences. Performance depends on accurate syntactic processing and appropriate usage of words, phrases and clauses in meaningful sentence structures.

### Vocabulary

Vocabulary reflects the ability to understand common everyday words spoken in sentence context and to produce such words as needed. Performance depends on familiarity with the form and meaning of everyday words and their use in connected speech.

### Fluency

Fluency reflects the rhythm, phrasing and timing evident in constructing, reading and repeating sentences.

### Pronunciation

Pronunciation reflects the ability to produce consonants, vowels and stress in a native-like manner in sentence context. Performance depends on knowledge of the phonological structure of everyday words.