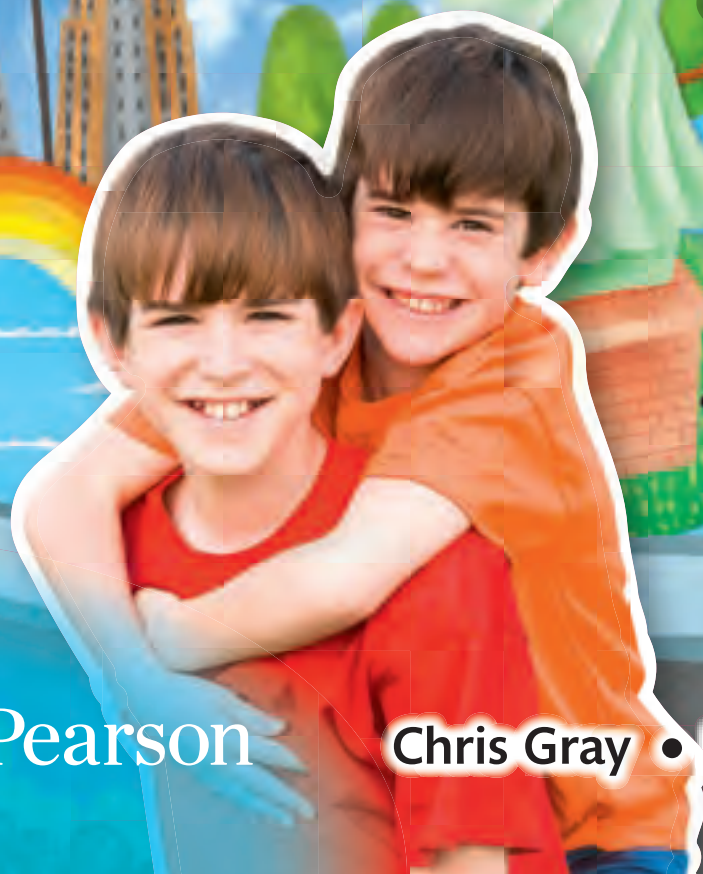


Primary Longman Express

2nd Edition



Pearson

Chris Gray • Rachel Jones

2A

1

Be good at school

Reading

Read the booklet about Dinosaur School. What are the rules at Dinosaur School?

About our school



Hello, new students. Welcome to Dinosaur School!

We have a huge **garden**. It has lots of trees and flowers. There is also a large **playground**. We can climb, jump and play here.

We have lots of **classrooms**. There is also an **art room**, a **computer room** and a **music room**.



We have assemblies in the **hall** and eat lunch here too.

We have a big **library**. It has lots of books and magazines.

Post-reading

Read the booklet about Dinosaur School and its rules. Where are the dinosaurs? Write short answers.

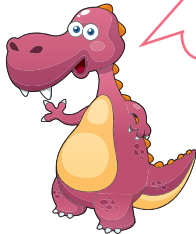
1

I'm eating lunch.



2

I'm in a quiet place. Shhhh!



3

This is fun! I love playing here.



Choose the best answers by blackening ● the circles.

4 There is no _____ at Dinosaur School.

☐ A. music room

☐ B. computer room

☐ C. swimming pool

☐ D. art room

5 Which of these can the students do?

☐ A. climb the trees

☐ B. play on the grass

☐ C. run in the hall

☐ D. read magazines

★ 6 Who is this booklet for?

☐ A. teachers

☐ B. parents

☐ C. new students

☐ D. all students

Explore

Talking about big and small

large = big

huge =
very big

small

tiny = very small



Key Words

1

Places at school



a classroom



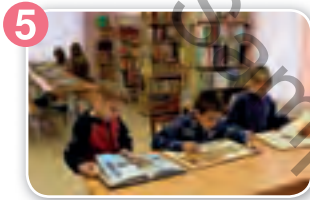
an art room



a computer room



a music room



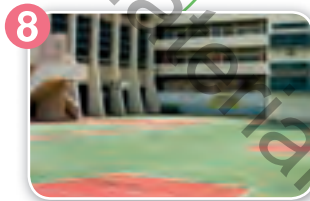
a library



a corridor



a hall



a playground



a garden



a tuck shop

Key Structures

Don't climb the trees.



Don't touch the computer.



Don't run around.



Sit still



Line up



Keep quiet



Keep off the grass



Wait for your turn



Clean your table



in the

hall.

corridor.

library.

garden.

computer room.

art room.

Don't = Do not

Practice 1

Don't talk.

A The pupils are not behaving. Finish what the teachers say.

climb the trees touch the piano run around talk touch the computer

1



Don't talk.

2



3



4



5



6



B Polly and Dan are at the tuck shop. Listen and circle the correct letters.

1 Which sign does Polly point to? A. B. C. D.

2 How does Polly feel? A. sad B. happy C. angry D. surprised

Phonics

cl-

cl

classroom

close

clap

Let's say the letter sounds and words!

pl-

pl

playground

play

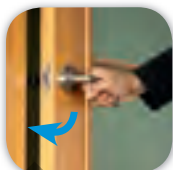
plane



A Write the letters and say the letter sounds. Then say the words.



cl



1 ____ assroom

2 ____ ose



pl



3 ____ ayground

4 ____ ane



B Listen and say. Can you hear the difference between the beginning sounds?

1



☐ **cl**ap



☐ **c**ap

2



☐ **pl**ay



☐ **p**ay

Now listen and tick the words you hear.



C Listen and write the letters 'cl' or 'pl'. Say the sentences.



____ ease don't ____ ay with ____ ay.

____ ean your hands and put it away!

You can also blend 'l' with other sounds.

black

flower

glass

slow



Directories tell us where different places are in a building.


Floor numbers

Name of the building

Sunflower Primary School Block A

7/F seventh floor	rooftop garden		greenhouse		
6/F sixth floor	music room		art room		
5/F fifth floor	orchestra room		reading corner		
4/F fourth floor	library		computer room		
3/F third floor			school hall		
2/F second floor	campus TV studio		staff room		
1/F first floor	general office		medical room		
G/F ground floor	lift		toilets		tuck shop

Answer the questions.

- You can see  on the ____ floor.
☐ A. ground ☐ B. fourth ☐ C. sixth ☐ D. seventh
- You can't ____ in this school.
☐ A. sing songs ☐ B. read storybooks
☐ C. swim ☐ D. look at flowers
- Where else can you see directories?

Mini Task

Draw the directory of your school and write some rules for your favourite place.