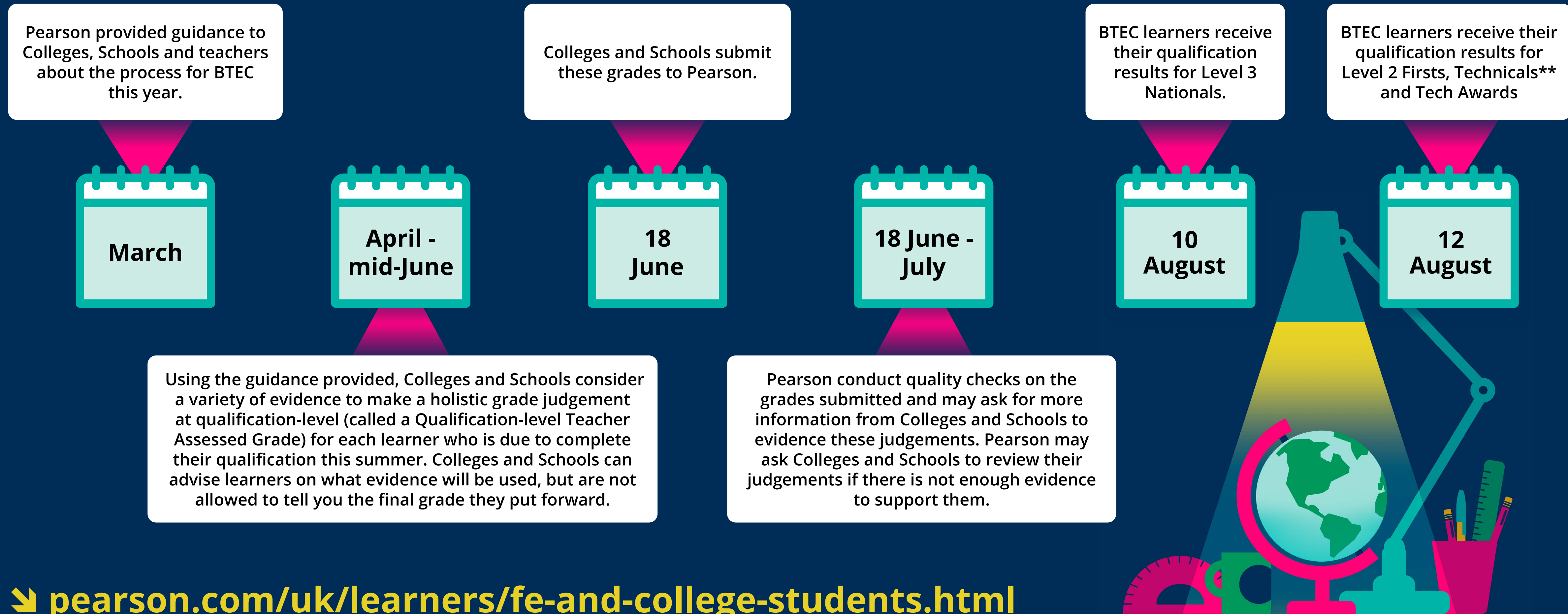


# Timeline for Summer 2021 BTEC Grading\*

Teaching, Learning and Internal Assessment can continue where possible, and this evidence can be used to support the holistic grade judgement a College or School will make for each learner.



➔ [pearson.com/uk/learners/fe-and-college-students.html](https://pearson.com/uk/learners/fe-and-college-students.html)

\*For BTECs most similar to GCSEs and A-Levels (Level 3 Nationals, Level 2 Firsts, Technicals\*\* and Tech Awards). \*\*Not all BTEC Technicals are permitted to have a 'Teacher Assessed Grade' this year. Your College or School will be able to advise you further.