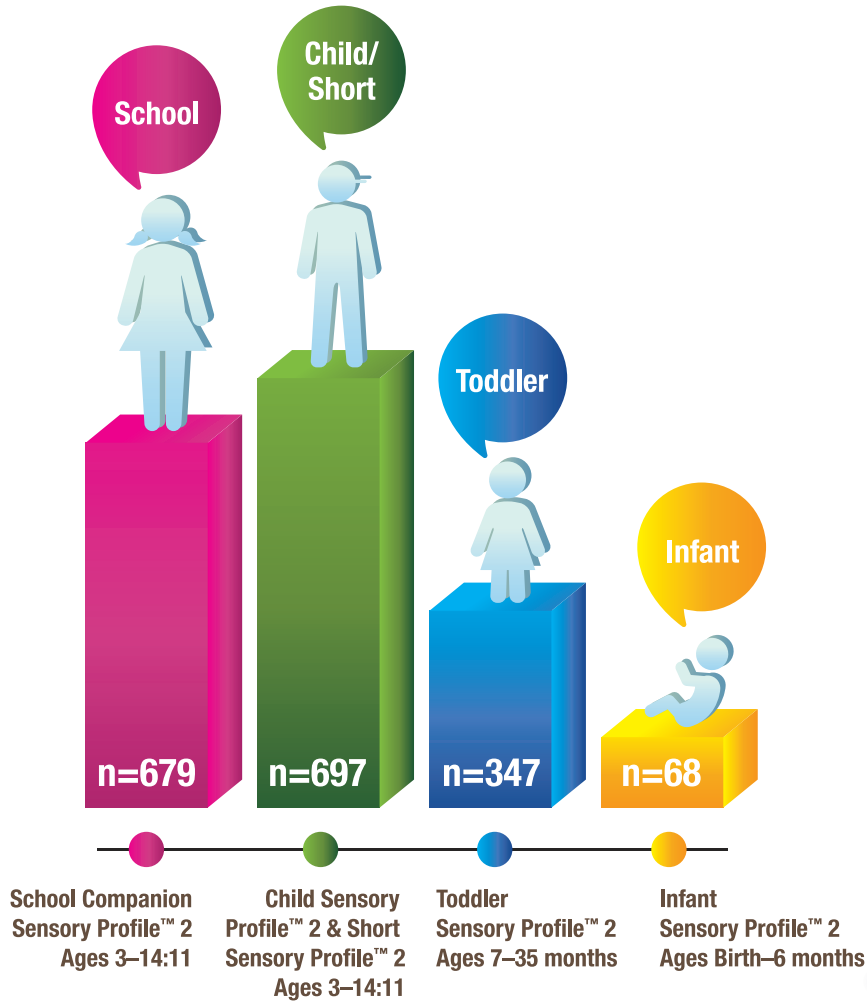


DEMOGRAPHICS



1,791 DEMOGRAPHICALLY REPRESENTATIVE CHILDREN AGES BIRTH THROUGH 14:11



- 337 children rated on both the Child Sensory Profile™ 2 and School Companion Sensory Profile™ 2
- 898 boys and 893 girls
- 10% of standardization sample included children with vulnerable conditions, closely matching their incidence in the general population



TECHNICAL SUMMARY

VALIDITY

CLINICAL GROUPS



(n=774 children with vulnerable conditions matched with 774 children without disabilities):

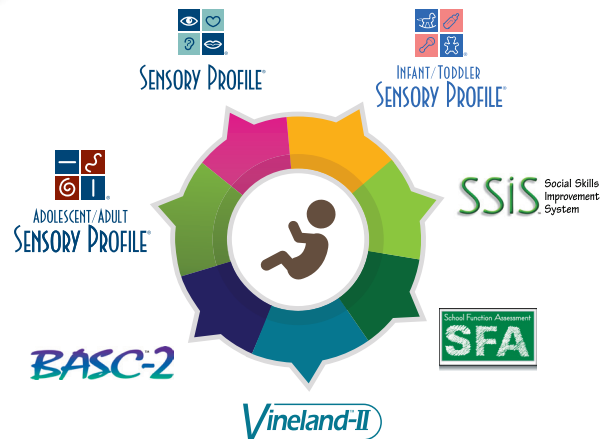
Significant differences between typically developing matched peers and key vulnerable groups:

- Developmental delay and Toddler form
- Autism and Child/Short forms
- Attention deficit/hyperactivity disorder (ADHD) and Child/Short forms
- Dual diagnosis of autism and ADHD and Child/Short forms
- Learning disability and School form



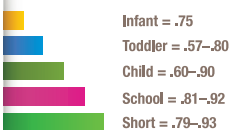
Note: Short Sensory Profile 2 discriminates on a similar pattern to Child Sensory Profile™ 2

CORRELATION STUDIES WITH OTHER MEASURES

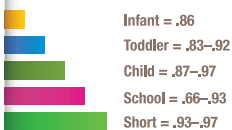


RELIABILITY

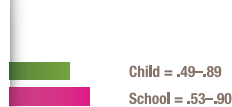
INTERNAL CONSISTENCY



TEST-RETEST RELIABILITY



INTERRATER RELIABILITY



For further information including author podcasts visit pearsonclinical.co.uk/sensoryprofile

0845 630 8888 | PsychCorp | pearsonclinical.co.uk

Copyright © 2014 Pearson Education, Inc. or its affiliate(s). All rights reserved. BASC, Sensory Profile, SSIS, Vineland, Always Learning, Pearson, design for Psi, and PsychCorp are trademarks, in the U.S. and/or other countries, of Pearson Education, Inc. or its affiliate(s). 9442 5106064 10/14