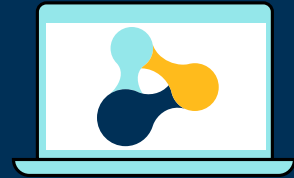


Pearson Tutoring Schools Session Guide



This document has been designed to give you a basic overview of Pearson Tutoring sessions and the resources available. For more in-depth information, please refer to our [Schools Session Detailed Guide](#) and [Implementation Guides](#).

Pearson Tutoring resources

Student selection support

Our GCSE baseline diagnostic tests for **English Language**, **Maths** and **Science** are freely available from the **resources area of our website** and can be used to help decide which of your students need extra support.

Download the diagnostic tests ►

Lesson overviews and sample content

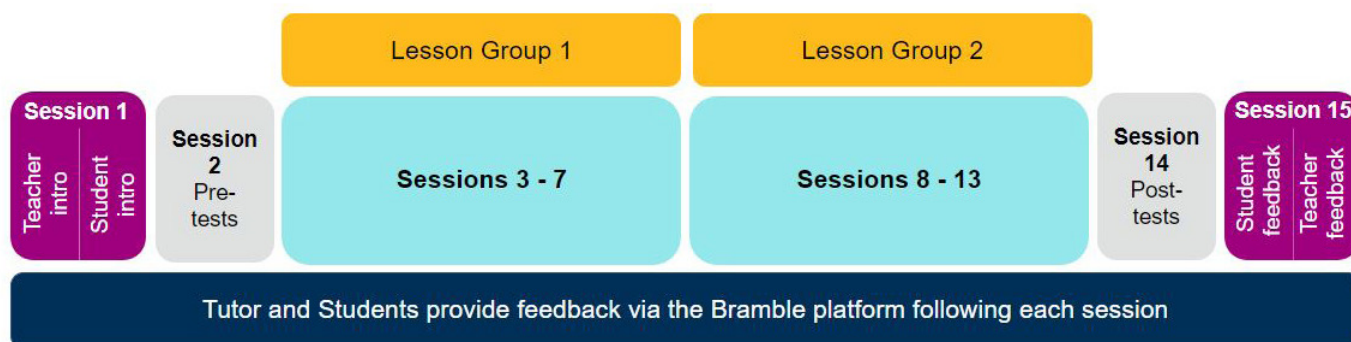
To help you decide which lesson options you want your blocks to cover, we have provided lesson overviews, sample lessons and pre-tutoring tests. You will need to select **two topics** for each of your tuition blocks from the **lesson overviews** and confirm them to your tutors as appropriate before the first sessions.

Download the lesson overviews, sample lessons and pre-tutoring tests ►

Lesson structures of 15 x 1-hour sessions

Each tutoring block consists of 15 sessions (each lasting one hour), and there are currently two options to choose from:

- 15 sessions / One student group (please see block image below)
- 15 sessions / Two student groups (up to six students)*



*For more information on Two student groups, please see our [Schools Session Detailed Guide](#).

Accessing feedback on Bramble

Group and Individual student progress and attendance can be viewed via the Student Dashboard on Bramble.

The Bramble Smart Search function significantly enhances this element of interactivity to support student learning by allowing students to search key words and be transported to the exact moment in their sessions where that key word was discussed, making it an ideal tool for revision and knowledge retention.

[Watch the Smart Search from Bramble video](#) ▶

[Watch Your Student Dashboard on Bramble video](#) ▶

Further support and how to contact us

To find out more about tutoring and the funding options available, please use our webform.

[Webform](#) ▶

[View our Frequently Asked Questions](#) ▶

Do you have a question that you cannot find the answer to?

Please contact us via our Support Portal and we will get back to you as soon as possible (usually within 48 hours).

[Support Portal](#) ▶