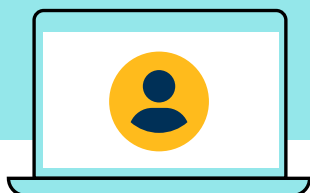




Pearson Tutoring Schools Session Guide



This guide covers your tutoring sessions in more detail, and includes information about:

Pearson tutoring resources

Structure of tutoring sessions

Accessing feedback on Bramble

Pearson Tutoring resources

1. Student selection support

Our GCSE baseline diagnostic tests for **English Language**, **Maths** and **Science** are freely available from the **resources area of our website** and can be used to help decide which of your students need extra support.

Download the diagnostic tests ►

2. Lesson overviews and sample content

To help you decide which lesson options you want your blocks to cover, we have provided lesson overviews, sample lessons and pre-tutoring tests. You will need to select **two topics** for each of your tuition blocks from the **lesson overviews** and confirm them to your tutors as appropriate before the first sessions.

Download the lesson overviews, sample lessons and pre-tutoring tests ►

Structure of tutoring sessions

Each tutoring block consists of fifteen, one-hour sessions, and there are currently two options to choose from:

- 15 sessions / One student group (up to three students)
- 15 sessions / Two student groups (up to six students)

A split group block of tutoring must be communicated to tutors in advance of the sessions starting.



One student group | block structure

Students will have 15 sessions, as follows.

Session 1 – Introduction: Two 30-minute sessions.

- 30-minute introductory session between the subject teacher and tutor to cover student needs, main area of focus and any other information that might be useful to the tutor
- 30-minute student / tutor introductory session in the presence of school staff member.

The first session is an important opportunity for our tutors to build rapport with your students before the first tutoring session and help boost their confidence and engagement. You should expect the tutor to engage the students in a 'getting-to-know-you' discussion, along with outlining the tutoring opportunity and setting expectations and boundaries.

The ideal situation for the first session is, as outlined above, that the class teacher meets the tutor for the first half of the session. However, we understand that this is not always possible (for example if one teacher has several blocks starting at the same time, making attending a session with each tutor logistically impossible).

In these instances, the class teacher or head of department (someone who knows the students and their needs well), should either set up a separate meeting with the tutor or have a detailed and clear email exchange (including our **Teacher to Tutor One Student Group - Block Details** form) with the tutor to ensure they are fully briefed on the needs of each student and confirming the two teaching groups which will form the tutoring block.

[Download the Teacher to Tutor One Student Group - Block Details form](#) ►

Session 2 – Pre-tests: The best way to measure students' progress in relation to the tuition received is to complete the pre and post-tests at the beginning and at the end of each block.

In Session 2, the tutor will conduct pre-tests based on the two topics selected. The tests can be conducted in two different ways.

- Tutors can administer the tests online, without the need for them to be printed and scanned or
- The tutor can send you the tests to print and give to the students for completion during the session. After the session, you will need to collect them and scan or take photos of the pages and email them to the tutor for marking.

The tutor will use the insights gathered from the first session and completed pre-tests to inform their planning. The Assessment scores will be uploaded to Bramble and visible for teachers assigned to the tuition group to keep track of outcomes.

Sessions 3-7 – Tutorial: The first topic will be delivered in these sessions. Tutors will submit feedback after each session including a CUE (Confidence, Understanding and Engagement) rating for each student. We would also encourage students to self-evaluate their CUE.

Sessions 8-12 – Tutorial: The second topic will be delivered in these sessions. Tutors and students will submit feedback after each session including CUE ratings.

Session 13 – Revision: This session is used to revisit the topics covered in preparation for the post-tests. The tutor will also support exam skills in this session.

Session 14 – Post-tests: As with the pre-tests, the tests can be conducted in two different ways. The tutors can conduct the tests online, without the need for them to be printed and scanned.

Session 15 – Final feedback: Two x 30-minute sessions.

- 30 minutes for students to receive their final feedback from the tutor
- 30 minutes for the school subject teacher to receive feedback about the students.

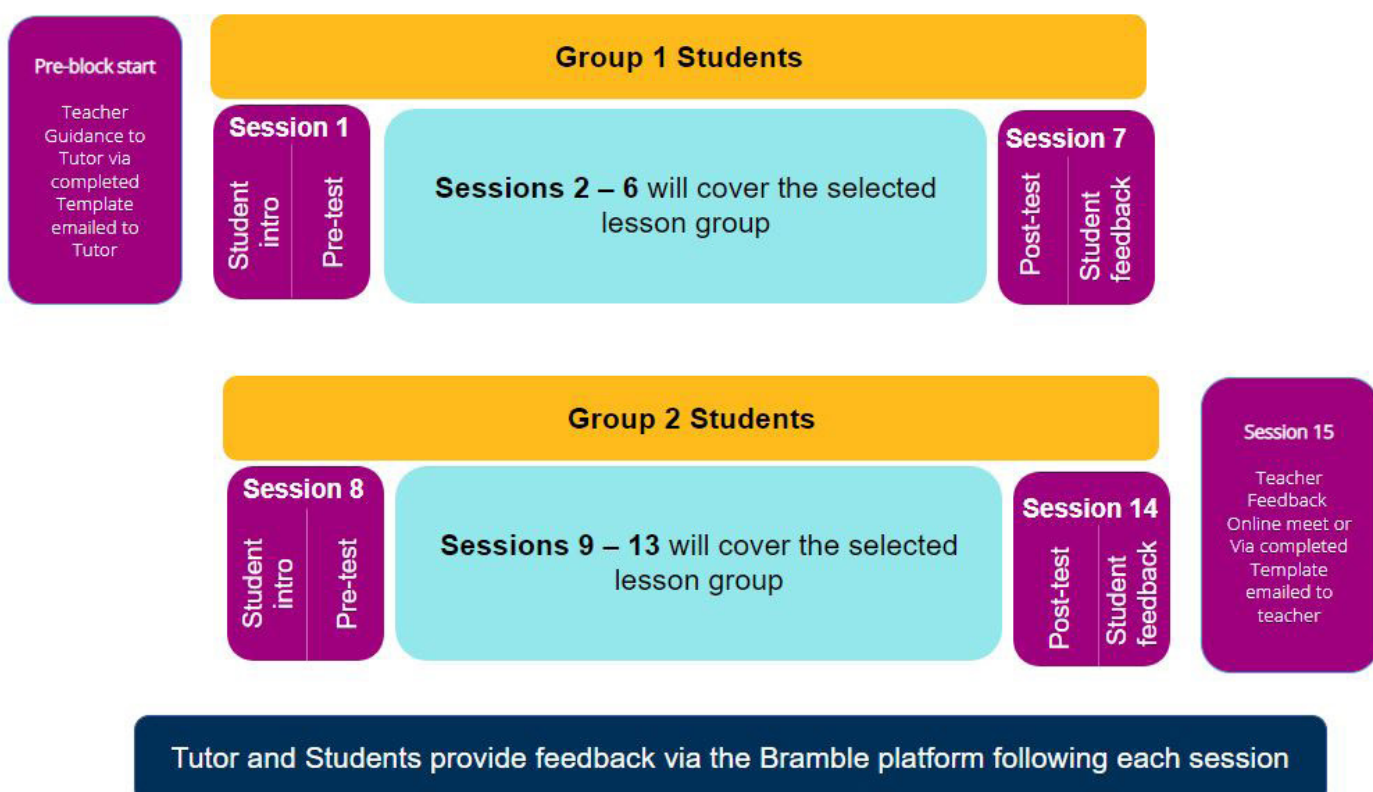
If teachers are unable to attend the 30-minute feedback session with tutors, please let them know and they can send their feedback by email instead.

During the final feedback session, students will be encouraged to not just look at their test scores but also to think about how their level of confidence might have changed, or their awareness of what helps them learn best. The tutor may make a recommendation for their next steps in terms of any additional support they may need to help them achieve their goals.

Two-student groups | block structure

For maximum impact, most blocks will run with the same students for all 15 sessions.

However, it is possible to have two groups of students participate in a block - for example if you needed two different year groups participate in bursts of exam revision. If you select this option, the students will change after session 7, and each group would cover one topic from the lesson overviews (as per the block structure diagram below).



Please note that if you select this option, you will need to complete a Teacher to Tutor (Two Student Groups) Block Details form for each block and send it to each tutor as appropriate. All 15 sessions must be run with the same tutor.

[Download the Teacher to Tutor One Student Group - Block Details form](#) ►

The format of the sessions in a two-student group block is slightly different, but key elements remain the same as one student group blocks, as follows.

Session 1 – Group 1 student introduction and Pre-test: This session will be split in two. The first half will be an introduction between the students and the tutor, as per the single group structure.

In the second half the students will take the pre-test for the topic selected to be covered as per the single group structure.

Sessions 2-6 – Tutorial: The topic chosen from the lesson overviews will be delivered in these sessions as per the single group structure.

Session 7 – Post-test and student feedback: In the first half of this session, the students will complete their post-tests. Because feedback is to be given in the same session, the tutor will complete the post-tests online allowing them to provide instant feedback.

The student feedback session will be conducted as outlined in the single group structure.

Session 8 - Group 2 student introduction and Pre-test: This session will be split in two. The first half will be an introduction between the students and the tutor as per the single group structure.

In the second half the students will complete the pre-test for the topic selected to be covered as per the single group structure.

Sessions 9-13 – Tutorial:: The topic chosen from the lesson overviews will be delivered in these sessions as per the single group structure.

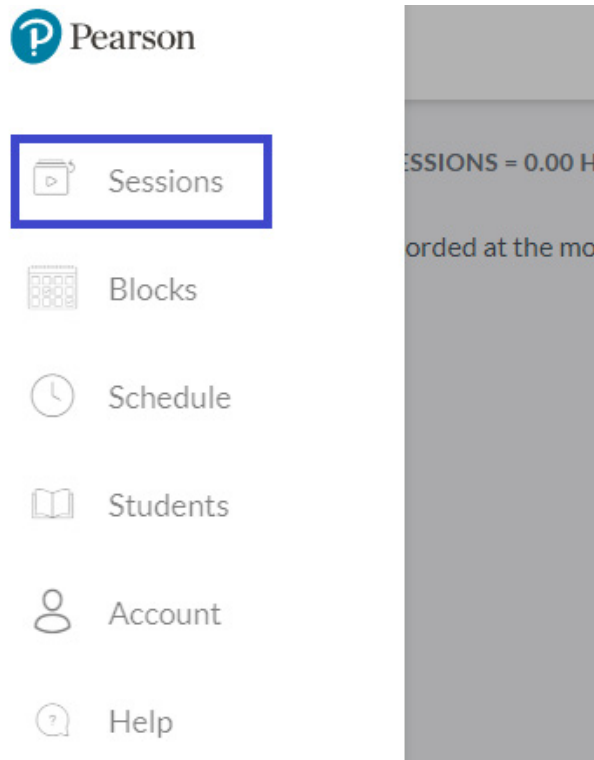
Session 14 – Post-test and student feedback: In the first half of this session, the students will complete their post-tests. Because feedback is to be given in the same session, the tutor will complete the post-tests online allowing them to provide instant feedback.

The student feedback session will be conducted as outlined in the single group structure.

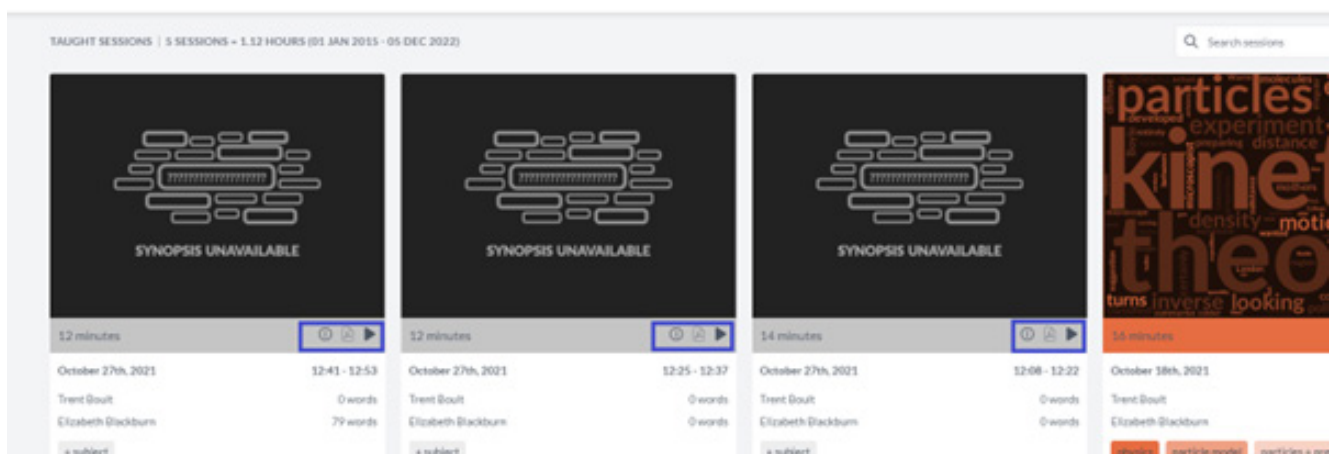
Session 15 - Teacher feedback session: In this session, you will receive feedback from the tutor for both student groups. If teachers are unable to attend their 30-minute feedback session with the tutors, please let them know and they can arrange to send their feedback by email instead.

Accessing feedback on Bramble

Your tutor will provide ongoing feedback reports on the progress of the students. These are accessible to you via the **Session** section of the main Bramble menu.



Once a session has taken place, it will appear on the 'Taught Sessions' page, as below.



To access a session recording, click on the 'Play' icon.

You can also:

- View feedback submitted by the tutor by clicking on the 'i' icon
- Download any session notes completed by clicking on the PDF icon

Please note – Students can also access full session recordings and use them as a revision tool for their exams. Bramble's Smart Search feature significantly enhances this element of interactivity to support student learning.

Watch the Smart Search from Bramble video ►

Student Dashboard

The student dashboard provides a school level overview of all tutoring insight data in one place.

≡ Students

STUDENTS (01 JAN 2022 - 23 NOV 2022)					Search by student name		+
NAME	HOURS / EXP.	SUBJECTS	ASSESSMENTS	CUE LATEST			
Ada Lovelace	0 / 15 hours (0%)	biology organisation animal tissues + organs		? ? ?			>
Albert Einstein	5 / 15 hours (33%)	maths algebra sequences + series solving equations number structure + calculation numeracy		80 90 80			>
Charles Darwin	10 / 15 hours (67%)	maths number structure + calculation		80 90 100			>
Emily Dickinson	0 / 15 hours (0%)			? ? ?			>
Frederick Faber	4.5 / 15 hours (30%)			? ? ?			>
Geoffrey Chaucer	12.5 / 15 hours (83%)	other english reading literacy critical reading writing grammar		70 80 80			>

Accessed from the main Bramble menu by selecting 'Students,' the dashboard allows you to see the following at a glance:

- How many hours a student has attended
- Subjects and topics covered
- Assessment Scores
- Latest CUE ratings by both tutors and students.

You can find out more in this Bramble (YouTube) video – Your Student Dashboard on Bramble.

Watch Your Student Dashboard on Bramble video ►

Useful links

[Parents and carers consent form](#)[Parents and carers privacy notice](#)[Safeguarding policy](#)[Bramble walkthrough video - teachers](#)[Bramble walkthrough video - students / parents](#)

Further support and how to contact us

To find out more about tutoring and the funding options available, please use our webform.

[Webform](#)[View our Frequently Asked Questions](#)

Do you have a question that you cannot find the answer to?

Please contact us via our Support Portal and we will get back to you as soon as possible (usually within 48 hours).

[Support Portal](#)