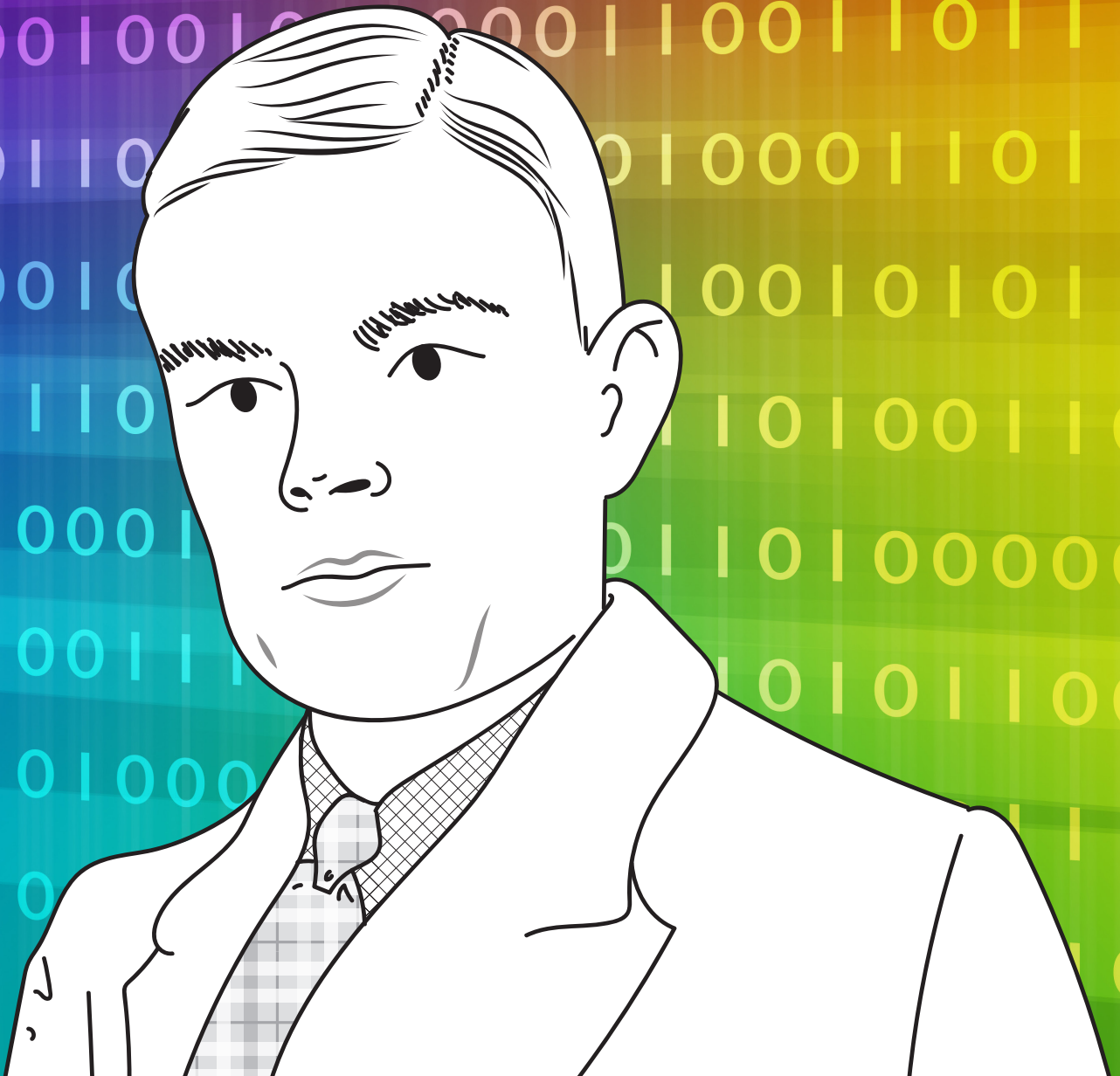
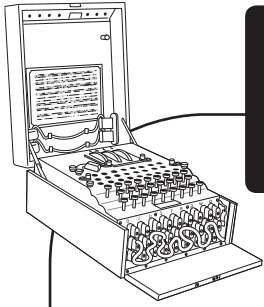


Alan Turing

1912 – 1954



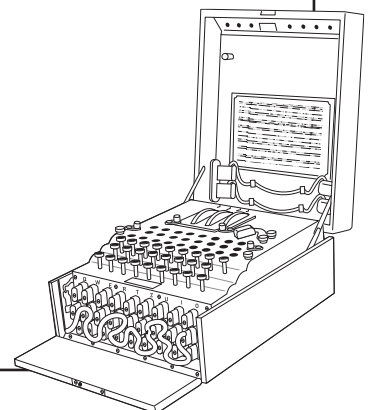


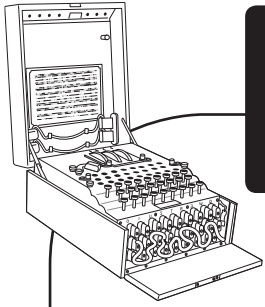
Create your own code

Can you try to create your own code language?

For each letter of the alphabet, use a symbol, number or a different letter that will represent it.

A	
B	
C	
D	
E	
F	
G	
H	
I	
J	
K	
L	
M	
N	
O	
P	
Q	
R	
S	
T	
U	
V	
W	
X	
Y	
Z	





Create your own code

Can you try to create your own code language?

**Can you write your name in your new code language?
Have a go here:**

Now have a go at writing these sentences with your new code language. Don't forget to fill in the blanks with your choice of word:

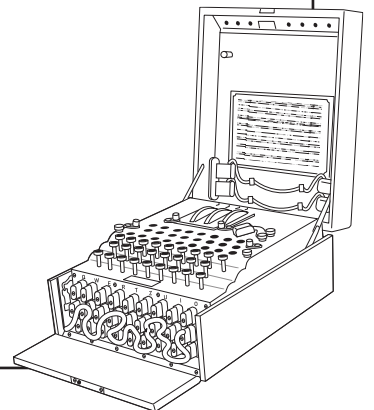
My favourite animal is:

Out my window I can see:

The best flavour of ice cream is:

My birthday is:

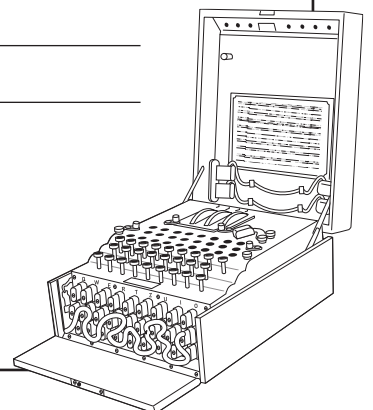
For dinner tonight I will be eating:

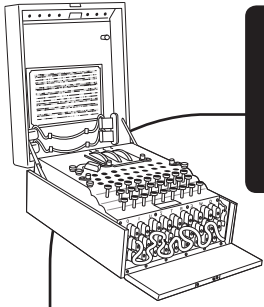




Write a letter to someone in your family in your code language. Give them your code chart and time how long it takes for them to understand and read your message. How long did it take them to break the code?

Why do you think it was important for messages to be coded during World War II ?





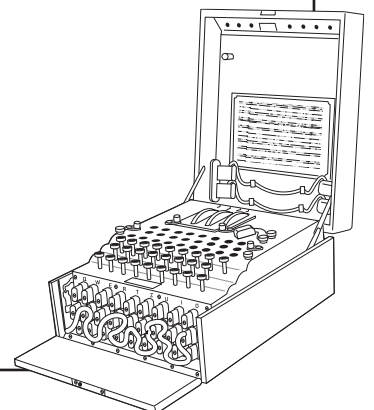
Word Search

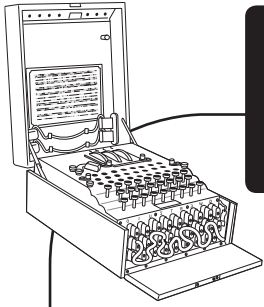
Can you find all 10 words?

c	o	m	p	u	t	i	n	g	c	e	n	k	a	t
a	l	e	i	e	l	n	k	m	a	c	h	i	n	e
h	p	s	t	s	b	l	e	t	c	h	l	e	y	c
l	f	s	n	p	g	r	p	u	h	u	q	g	d	h
m	e	a	b	h	k	e	l	r	f	m	o	l	k	n
l	o	g	i	c	b	m	c	i	r	e	x	b	a	o
y	k	e	m	c	o	d	i	n	g	v	f	q	w	l
n	o	s	f	k	m	d	j	g	q	o	n	l	j	o
p	e	i	c	g	b	f	h	f	l	m	a	g	d	g
j	m	a	t	h	e	m	a	t	i	c	i	a	n	y

Mathematician Technology
Coding Turing
Bombe Bletchley
Computing Machine

Logic
Messages





Tell Alan's Story

Put the story in order

- Turing designed and built a machine called the Bombe. This machine, along with the work of Alan and his team, allowed the British Government to understand the messages sent by the German military
- Alan Turing was a British computer scientist, mathematician and theoretical biologist, born in 1912.
- Turing helped to shorten World War II by about four years and was awarded an OBE for his efforts at Bletchley Park.
- Turing joined the British Government's Code and Cypher School and went on to work at Bletchley Park during World War II.

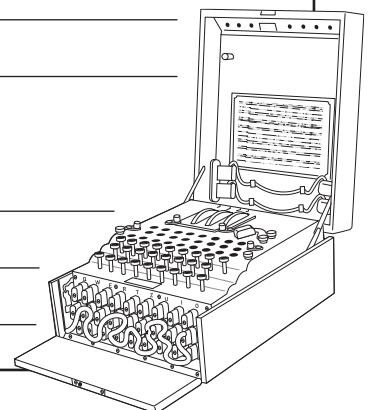


1.

2.

3.

4.



Colouring

Download and colour in this cartoon of
Alan Turing

