

Inclusive Access: the day-to-day reality



With the Pearson Inclusive Access model, students get course materials by the first day of class, at a significantly reduced price. It's easier. More convenient. Best of all, students can start learning (and faculty can start teaching) **immediately**.



Traditionally, 80% of students have been delaying purchasing required course content.¹

Experience your first term with Inclusive Access



The **student** experience



The **faculty** experience

BEFORE THE TERM

Register for your course

- Tuition or fees include course materials — nothing more to do!
- See exact cost of course content & get substantial savings

Choose course materials just like you do now

- Your students receive materials at a reduced price & get access to the content on or before the first day of class

DAY 1

Come to class with all you need to be fully prepared

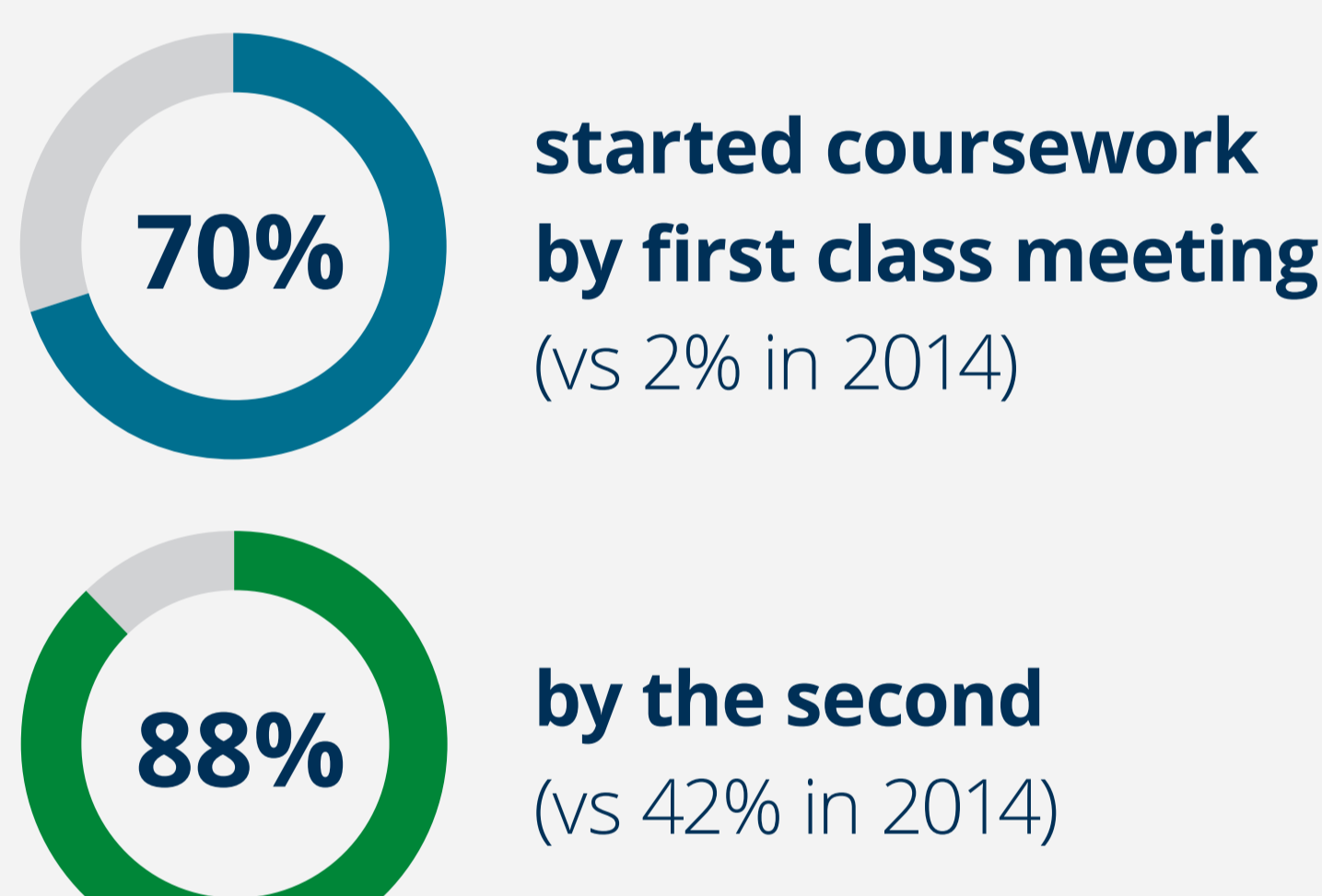
- Save time you might have spent shopping around
- Start studying & learning immediately
- Always have anytime/anywhere access to the most current digital content your professor chose

Begin instruction knowing *all* students have required content

- Your students all start on an equal footing without waiting for financial aid, shipping, or more shopping around
- You can assign homework or pre-readings sooner
- Institutional impact studies document improved outcomes

STUDENTS START STUDYING SOONER

After The University of Iowa adopted Inclusive Access:²



INSTRUCTORS CAN TEACH MORE

"[Traditionally] at 3 weeks about 30% of students had materials. Now we're at 100% on the first day of class. Think about how much more content they're receiving..."

Stephanie Duguid,
Dean of Academic Instruction,
Copiah-Lincoln Community College

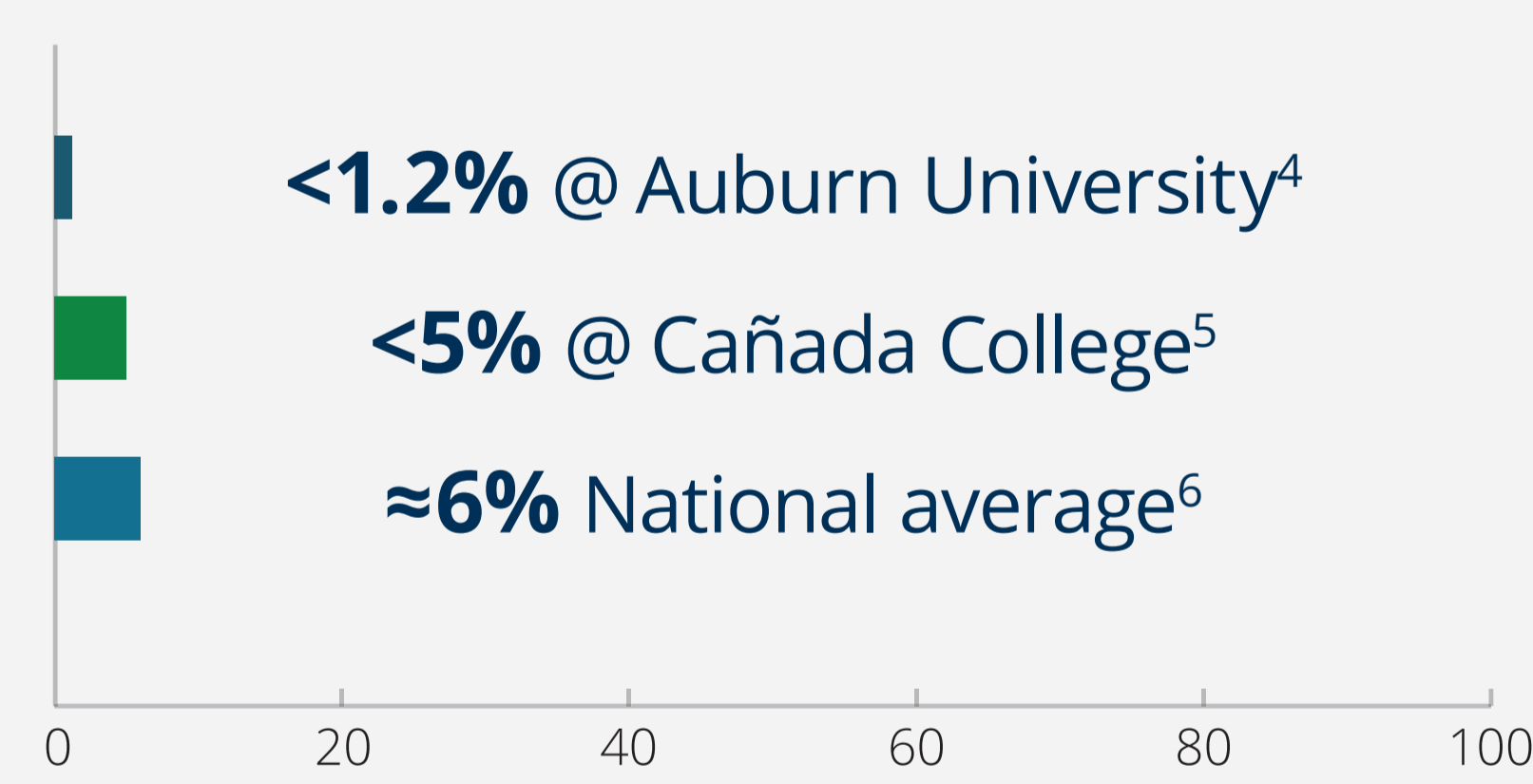


ADD/DROP DATE

Make your choice: it's up to you³

- If you choose not to receive digital content by the add/drop date, you're not charged

FEW CHOOSE TO OPT OUT



Students focus on engaging with your course, not acquiring materials

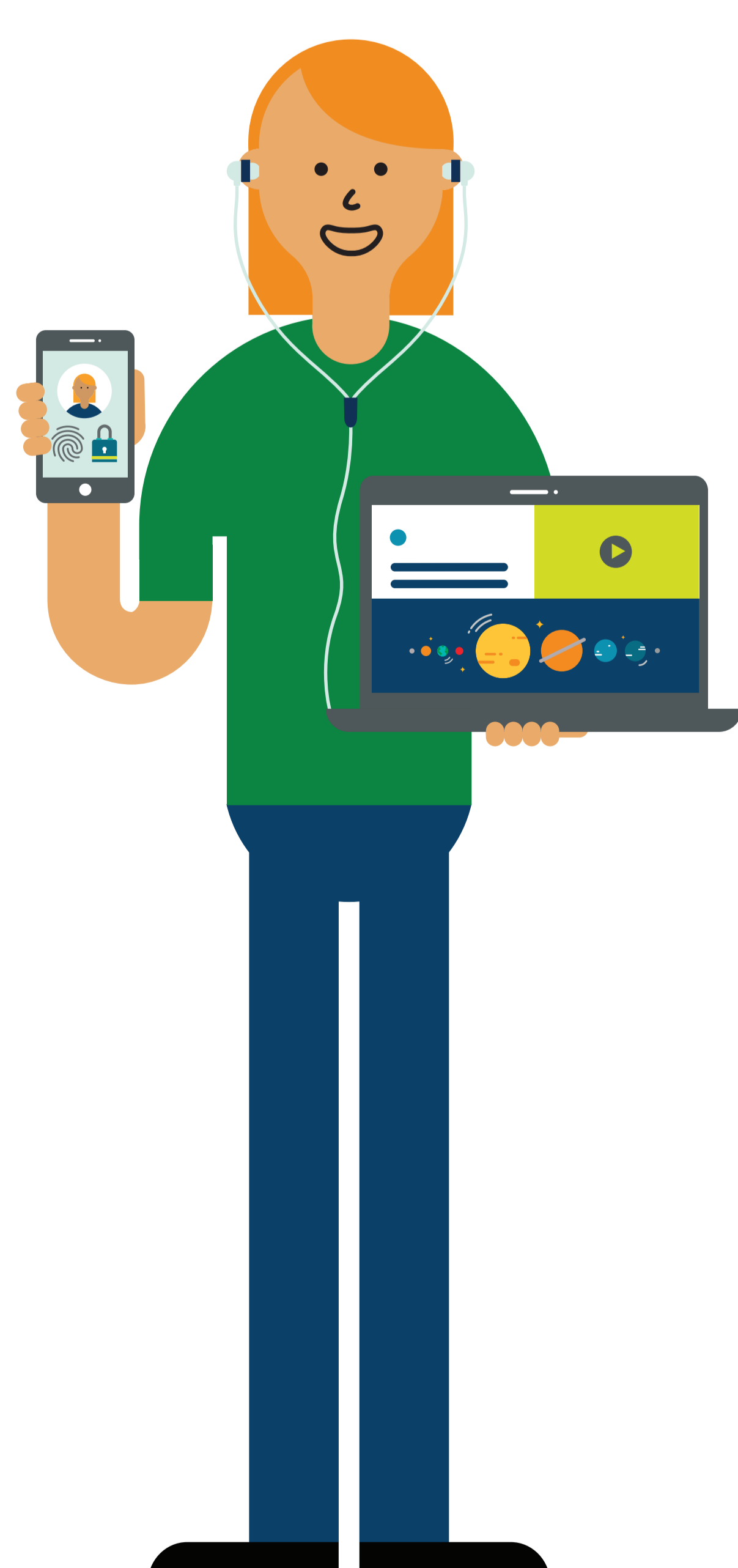
- Opt-out rates typically very low
- Smoothly continue your flow of instruction, knowing that students have their content



ALL TERM LONG

Study anytime & anywhere with your digital content

- You can study wherever & whenever it's convenient—so you're more likely to succeed
- Early access & interactive content have been shown to improve success



Know exactly what students are & aren't doing, so you can adapt

- Assess engagement via courseware reports and/or eText tracking
- Continually track student progress
- Optimize instruction & support for maximum student success

IMPROVED OUTCOMES

After adoption, Copiah-Lincoln Community College measured:

- +8%** graduation rates
- +10%** retention rates
- +17%** gateway math student success rates
- 68%** average student savings (vs. conventional prices)



Inclusive Access supports

- Retention & Engagement
- Acceleration & Advancement
- Equity & Affordability

Your decisions affect students. Discover how **Pearson Inclusive Access** can help you make a difference.

Sources

- VitalSource Survey QuickRead Report, May 2018, Wakefield Research
<https://get.vitalsource.com/hubs/2018/02/Wakefield/Wakefield%20Research%20QuickRead%20Report%20for%20VitalSource.pdf?r=153548827230>
- Inclusive Access study tracks student access and cost savings, University of Iowa, Iowa City, Iowa
<https://www.pearsoned.com/inclusive-access-study-tracks-student-access-cost-savings-university-iowa/>
- Typically, students may opt out or opt in until the add/drop date passes, depending on state or institutional rules.
- Inclusive Access study tracks student access and cost savings, Auburn University, Auburn, Alabama
<https://www.pearsoned.com/inclusive-access-study-tracks-student-access-cost-savings-auburn-university/>
- How a veteran in the education world is working to combat the skyrocketing cost of college
<https://www.pearsoned.com/veteran-education-world-working-combat-skyrocketing-cost-college>
- As reported by RedShelf