

The last time!



This is the last time we'll be taking a break to concentrate on time. We've already taken a Time Out (hours, minutes) and celebrated Happy Days (of the week) in **Hai! 3**. Now we come to the last 'time' thing we need to learn about: months and dates.

So, in The last time! you learn:

- to say what month it is
- to say when your birthday is
- to tell someone the date
- about Golden Week
- new readings for 月 and 日



何月？ ながつ？ What month?



Months					
いちがつ	January	ごがつ	May	くがつ	September
2月	February	ろくがつ	June	じゅうがつ	October
さんがつ	March	しちがつ	July	じゅういち がつ	November
しがつ	April	はちがつ	August	じゅうに がつ	December

たんご

▶ It's easy to say what month it is 日本語で: you simply use a number from 1 to 12 and add 月.

▶ When you're talking months of the year, 4 is always し, 7 is しち and 9 is く.

new reading moon, month

月曜日 げつようび Monday
1月 いちがつ January

しましろう

1 This sign hangs over the door of a restaurant in 東京. What is the restaurant called? (And who is the girl supposed to be?)

2 何月? なんがつ?

In what month do these things occur? Give your answer 日本語で.

- New Year's Day
- Valentine's Day
- April Fool's Day
- Mother's Day
- Father's Day
- Christmas Day
- (In Japan? In your country?)

People in your class will think of other important things to ask about, including national celebrations, local shows and big sporting events.



ぺんきょうページ



Dates

When you see a date written 日本語で you can always read it. You just have to keep in mind that in Japan they give the month first, then the day. So when you see 4月1日, you know they're writing about April Fool's Day. (You're no 4月のばか, are you?)

Reading dates is one thing, but how do you say them yourself? How do you answer the question 何日ですか? Well, the first ten days of the month are all special, 日本語で, so you have to treat them as a Special Learning Task. Here are some hints to make that task easier:

- 1日 is really special: you read it as ついたち.
- From 2日 to 10日 you read 日 as か.
- 3日 and 4日 both have little つ sounds in their readings.
- The 'o' sound in 8日, ようか, is twice as long as the 'o' in 4日, よっか.
- 10日 has a long 'o' sound but in ひらがな it is written as とおか.

何日? なんにち? What day?

日	月	火	水	木	金	土
		ついたち 1日	ふつか 2日	みっか 3日	よっか 4日	いつか 5日
おひか 6日	なのか 7日	ようか 8日	ここのか 9日	とおか 10日	じゅういち にち 11日	じゅうに にち 12日

Now that you know the first ten days, you can face up to the rest of the month.

- Once you get past the tenth of the month you usually read the 'day' kanji, 日, as にち.
- All dates with 4日 are special: 14日 じゅうよっか、24日 にじゅうよっか.
- 20日 is really special too: you read it as はつか.

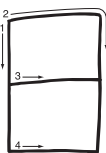
むいか 6日	なのか 7日	ようか 8日	このか 9日	とあか 10日	じゅういち にち 11日	じゅうに にち 12日
じゅうさん にち 13日	じゅうよっか 14日	じゅうご にち 15日	じゅうろく にち 16日	じゅうしち にち 17日	じゅうはち にち 18日	じゅうく にち 19日
はつか 20日	にじゅう いちにち 21日	にじゅうに にち 22日	にじゅう さんにち 23日	にじゅう よっか 24日	にじゅう ごにち 25日	にじゅう ろくにち 26日
にじゅう しちにち 27日	にじゅう はちにち 28日	にじゅう くにち 29日	さんじゅう にち 30日	さんじゅう いちにち 31日		

You will get lots of chances to reinforce this learning, since you will probably be asked 「きょうは何月何日ですか。何曜日ですか。」 as 先生 writes the date on the board before each 日本語 lesson.

かんじ

new reading sun, day

4 strokes



日本	にほん	Japan
父の日	ちちのひ	Father's Day
日曜日	にちようび	Sunday
一日	ついたち	1st day of the month
二日	ふつか	2nd day of the month
十一日	じゅういちにち	11th day of the month

たんじょうび おめでとう！



でも、ぼくのたんじょうびは
ようかです。

しましろう

Golden Week

People in Japan just love Golden Week, and every year they eagerly look forward to it. This is a time at the end of April and the beginning of May when four public holidays fall very close together.

The four holidays are Showa Day (April 29), Constitution Day (May 3), Green Day (May 4) and Children's Day (May 5). Green Day celebrates the natural environment and Constitution Day celebrates the Japanese political system.

In a really good Golden Week the holidays fall next to weekends, so that with a bit of clever planning, people can have a good break. Look at the こいのぼり to the right; each one represents a day in Golden Week. To work out whether this is a really good Golden Week or not, answer these questions.

- What colour こいのぼり represents weekends and public holidays?
- What day of the week is April 28? What do you think the yellow sticker on the advertisement is urging workers to do?
- School kids can't take days off so what days will they have to go to school?
- Why are people unhappy about Constitution Day this year?
- Everyone knows that Children's Day is 5月5日, but how would you ask what day of the week it is? And what day is it, according to the advertisement?

1日休んで
4連休



口れんしゅう

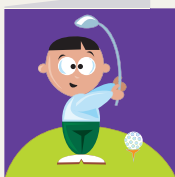
How about a date?

If you want to know the date of an event, you can ask 何月何日?. Or you can simply ask いつ?, 'when?'. Ask your partner about when these important events on the Japanese calendar occur.

You: 父の日はいつですか。

Partner: 6月15日です。

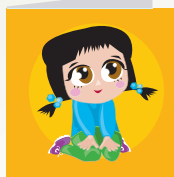
みどりの日, Green Day, is a public holiday when people are encouraged to remember the environment and to plant a tree.



父の日
6月15日



母の日
5月11日



こどもの日
5月5日



しょうわの日
4月29日



ba re n ta i n de e
バレンタイン・デー
2月14日



口れんしゅう

Warm-up

- Say a date and your partner will tell you whose birthday it is.

You: 6月30日

Partner: おさむさんのたんじょうびです。

Talking seriously

- Now ask when each person's birthday is.

You: おさむさんのたんじょうびはいつですか。

Partner: 6月30日です。



しましろう

The big birthday line-up

Form into groups of eight to ten students and line up in birthday order, earliest in the year at the front, latest at the back. To find out where you fit in, you'll have to ask everyone else in the line たんじょうびはいつですか。

When you have completed your line, everyone has to say their birthday out loud so that you can check to see that you have the order right. If you're still in doubt after going from front to back, try going from back to front.





うたいましょう！



何日のうた

Here is a song about some special days on the Japanese calendar. All except one of them are national holidays.

Japan celebrates New Year's Day (がんじつ) on the same day as Western countries, and it is a really big deal – parties, presents, the lot! You know about こどもの日 so we'll skip to たいいくの日. たいいく means 'fitness' or 'health', so this is a good day for Japanese people to renew their good resolutions about getting fit. ぶんか means 'culture', so ぶんかの日は a day to celebrate all that is special about Japanese culture.

And what can we say about Jake's birthday? It's not a national holiday yet, but he's working on it. Why not make a note of the date and send him a card?

- 1** がんじつは一月です
がんじつは一月です
がんじつは何日ですか
がんじつは一日です

くりかえし chorus:

ついたち 二日、三日、四日、五日、六日、七日、八日、九日、十日
ふつか みっか よっか
いつか ぶいか なのか
ここのか とあか
ここのか とあか

- 2** こどもの日は五月です
こどもの日は五月です
こどもの日は何日ですか
こどもの日は五日です

くりかえし chorus

- 3** たいいくの日は一十月です
たいいくの日は一十月です
たいいくの日は何日ですか
たいいくの日は一十月です

くりかえし chorus

- 4** ぶんかの日は十一月です
ぶんかの日は十一月です
ぶんかの日は何日ですか
ぶんかの日は三日です

くりかえし chorus

- 5** ジェークさんのたんじょうび、十二月です
ジェークさんのたんじょうび、十二月です
ジェークさんのたんじょうび、何日ですか
ジェークさんのたんじょうび、六日です

くりかえし chorus