

OxEd Literacy Assessment & Intervention

World-class, research-led assessments, intervention
and professional development proven to improve
educational outcomes



Oral language is the springboard to edu

In New Zealand foundational oral language skills that underpin reading and writing success vary significantly from one child to the next¹

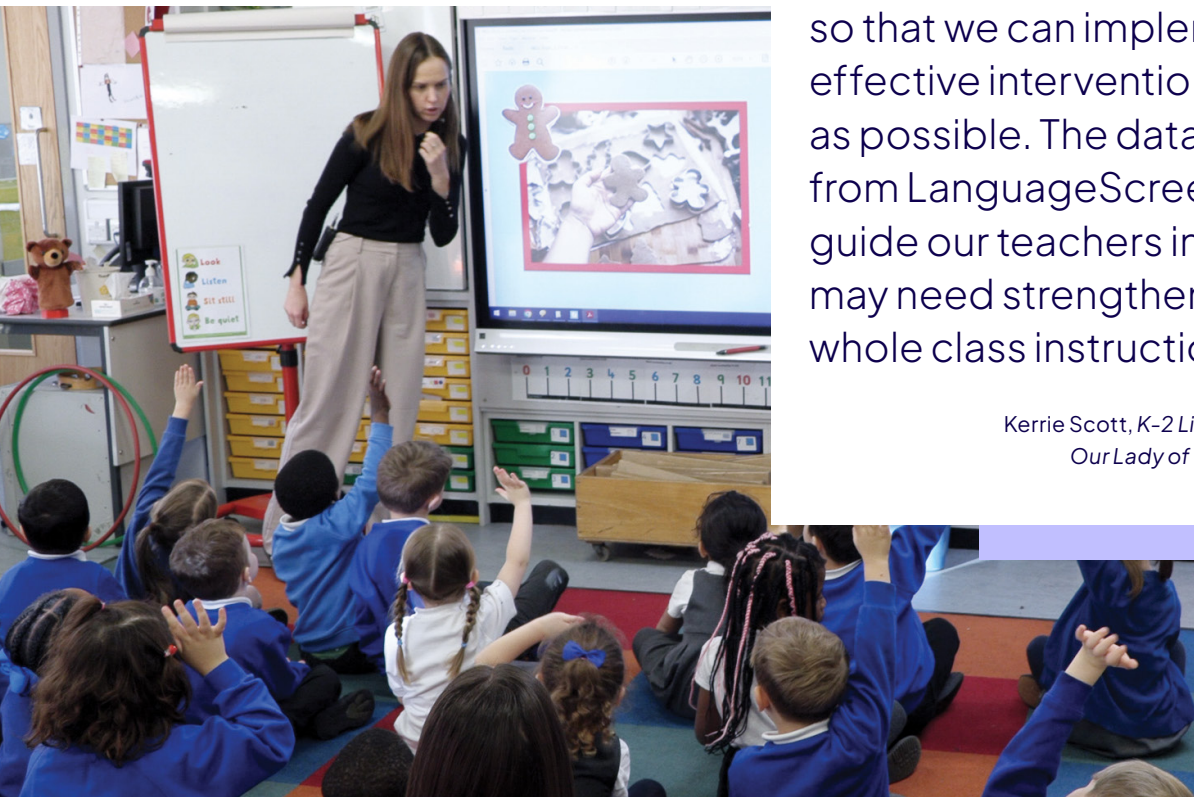
Without intervention, these children may go on to experience:

- ④ A widening gap in language skills, relative to peers
- ④ Reading difficulties
- ④ Writing difficulties
- ④ Socio-emotional and behavioural issues
- ④ Lower educational attainment
- ④ Limited career opportunities
- ④ Higher incidences of mental health issues.



Being a high EAL/D school we have been looking for a quick universal oral language screener for our students so that we can implement effective intervention as soon as possible. The data gathered from LanguageScreen will guide our teachers in areas that may need strengthening at the whole class instruction level. ”

Kerrie Scott, K-2 Literacy Coordinator
Our Lady of the Rosary Fairfield



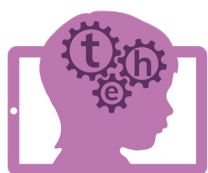
¹ Gillon, G., McNeill, B., Scott, A. et al. A better start literacy approach: effectiveness of Tier 1 and Tier 2 support within a response to teaching framework. Read Writ 36, 565–598 (2023). <https://doi.org/10.1007/s11145-022-10303-4>

Education and a bright future

Evidence-based literacy assessment and intervention resources
versioned for Australia and New Zealand



Language
Screen



Reading
Screen



Based on the Science of Learning research, OxEd's resources have been proven to be effective in randomised controlled trials and independent evaluations:

- ② The 10-minute LanguageScreen assessment is proven to be as accurate and reliable as a 30-minute language assessment conducted by a speech pathologist
- ② Students using Nuffield Early Language Intervention (NELI) made 3-5 months additional progress in language skills in only six months
- ② Students from socio-economically disadvantaged backgrounds made on-average seven months additional progress in their language skills
- ② NELI's positive effects can be seen longer term with students experiencing continued improvements in language and word reading two years post-intervention
- ② Participating in NELI led to improved student behaviours outside of sessions, as rated by teachers
- ② Students with English as an additional language made the same additional progress as children speaking English at home.



The NCCD is an Australia-wide initiative providing funding for students with special needs. OxEd assessment resources meet the evidence and data requirements to support NCCD funding applications.

Learn more at pearson.com.au/oxed



OxEd literacy assessments

LanguageScreen (Pre K–6)

LanguageScreen is an easy-to-use, scientifically proven assessment that accurately assesses oral language skills. It is used to identify students aged 3 to 11 years old who may require intervention or additional support. It also tracks their progress over time.

LanguageScreen automatically adjusts depending on the age of the student and tests:



1

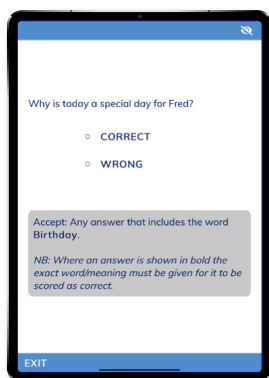
Expressive Vocabulary



- Identify each picture.

2

Listening Comprehension



- Answer questions about short texts.

3

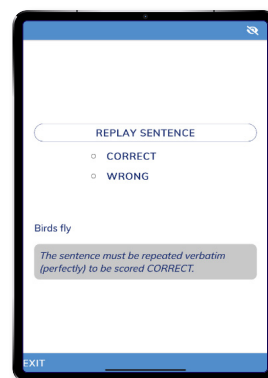
Receptive Vocabulary



- Match the picture to the spoken word (ages 3–8).

4

Sentence Repetition

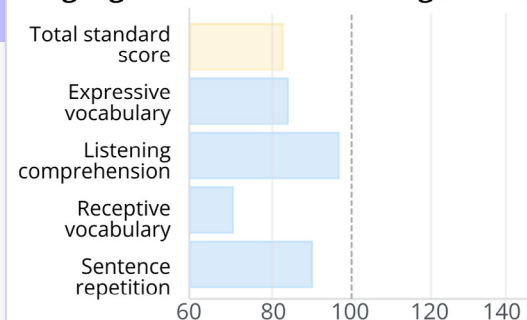


- Repeat sentences of increasing complexity aloud.

Assessment results

- Instant, detailed, yet easy to interpret reports
- Individual and class data and insights
- Provide a traffic light rating to clearly indicate students who would benefit from intervention
- Simple View of Reading report automatically generated when both LanguageScreen and ReadingScreen are used

LanguageScreen Profile for Imogen Tem

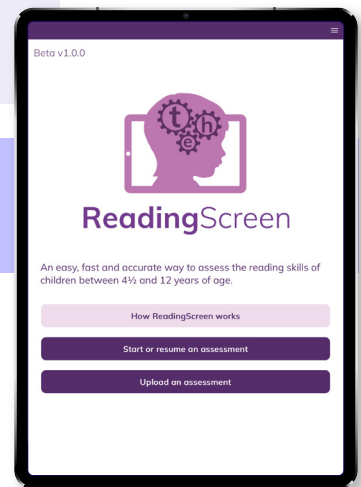


- ⌚ Can be administered by teachers, aides or even parents
- ⌚ Less than 10 minutes in duration
- ⌚ No paper marking or calculations
- ⌚ Easy to track students' progress over time
- ⌚ Compliant with data privacy standards
- ⌚ Australian audio

ReadingScreen (F-6)

ReadingScreen is an easy-to-use assessment that accurately assesses word and nonword reading, identifying students aged 4.5 to 12 years old who may require intervention and extra support to develop decoding skills.

ReadingScreen consists of two tests of fundamental reading skills:

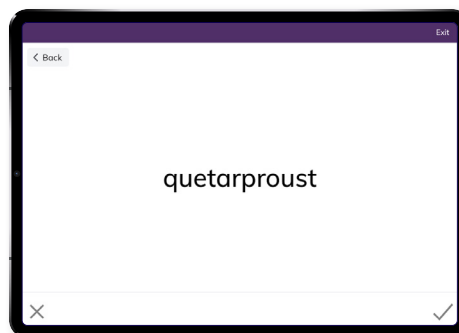


1 Word reading



- Up to 60 common words of increasing difficulty
- Each must be spoken correctly by the student
- Ends after 4 consecutive incorrect answers

2 Nonword reading



- Up to 34 nonwords of increasing difficulty
- Each must be spoken correctly by the student
- Guidance on acceptable pronunciation provided
- Ends after 4 consecutive incorrect answers



Scan the QR code to download a Simple View of Reading report



ple

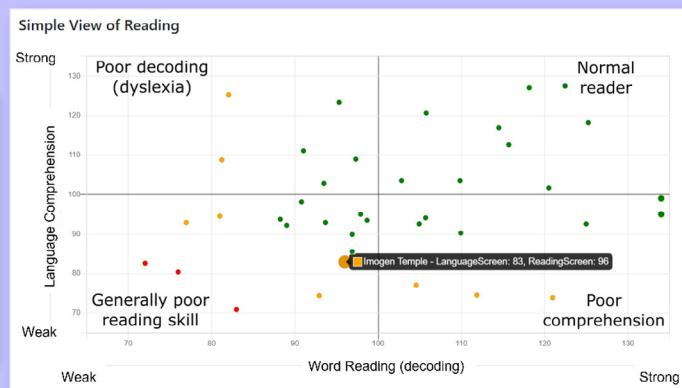
Imogen's LanguageScreen Total standard score is 83.

This equates to a percentile rank of 14, a score that places Imogen within the bottom 14% of children in their age group.

Imogen's language skills are a slight cause for concern; Imogen may benefit from language support.

Imogen's highest score is for Sentence repetition, a test that assesses the ability to repeat sentences and that is sensitive to grammatical difficulties.

Standard score (average 100)	Percentile	Description	Alert
73	4	clear concerns	🔴
83	13	slight concerns	🟡
104	61	no concerns	🟢
134	99	much above average	🟢



Learn more at pearson.com.au/oxed

OxEd early language intervention

NELI Program (F-2)

The Nuffield Early Language Intervention (NELI) Program is a research-backed 20-week oral language intervention program which has been proven to improve students' oral language and early literacy skills.

It is delivered by teachers or teacher aides to students in Foundation to Year 2 who have been identified as having oral language difficulties after LanguageScreen testing.



The NELI program consists of:

- 3 x 30 min group sessions per week
- 2 x 15 min individual sessions per week

The NELI Kit includes:

- two Teaching Handbooks with fully scripted and resourced lessons to make intervention delivery as easy as possible
- topics aligned to the Australian and New Zealand curricula covering: My Body, Things We Wear, People Who Help Us, Growing, Journey and Time
- colourful flashcards to support key vocabulary and story cards for narrative activities
- Ted, the cute puppet to aid teaching by engaging students.



OxEd NELI training

The NELI training courses equip teachers and teacher aides with the essential skills and knowledge to deliver the NELI and NELI Whole Class programs effectively.

- CPD-certified online training available on-demand via FutureLearn
- Become a fully certified NELI and/or NELI Whole Class practitioner
- Access ongoing support including use of the Delivery Support Hub, a program of webinars and a learning community

NELI Whole Class (F-2)

The Nuffield Early Language Intervention (NELI) Whole Class Program is a companion program to NELI, supporting classroom teachers to develop the oral language skills of all students and further boost the skills of those students receiving intervention.

The NELI Whole Class program consists of:

- 3 x 20–30 min class sessions per week

NELI Whole Class includes:

- a printed Teaching Handbook with activity sheets
- six sets of digital slides for the same six topics as NELI
- digital narrative sequencing cards
- 11 songs in mp3 format
- six audio stories in mp3 format



Scan the QR code to listen to a snippet of NELI Whole Class song 'Shake' and hear how it provides a fun way to practise Special Words!



Why language is critical in early education and beyond

In these steps, we will explore the impact of poor language skills on children's success in school and look at how NELI has supported children make progress with their language.



- 1.4 The importance of early language skills VIDEO (05:49)
- 1.5 Why early language intervention is critical ARTICLE
- 1.6 What is The Nuffield Early Language Intervention? VIDEO (03:40)
- 1.7 How to identify children for NELI VIDEO (03:38)
- 1.8 Check your understanding QUIZ

NELI practitioner training course list

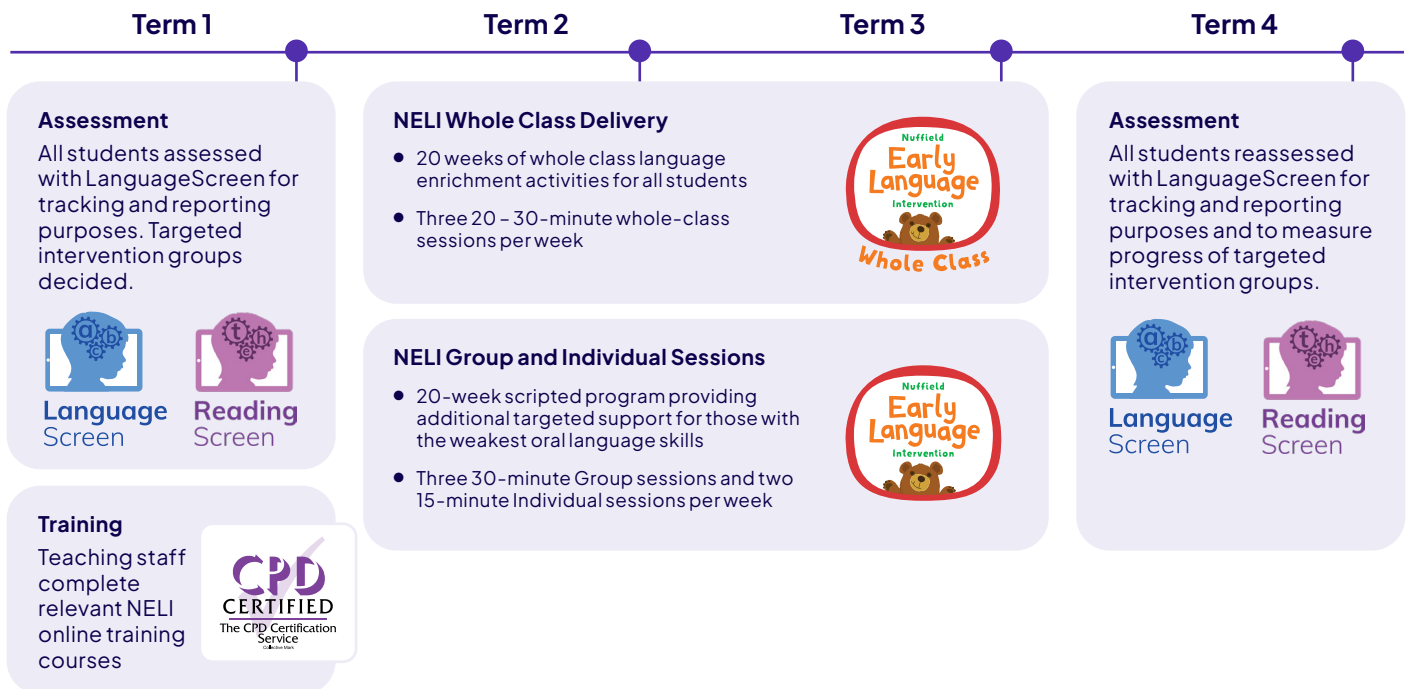
	NELI	NELI Whole Class
Language Fundamentals (5 hours)		
Delivering NELI Part 1 (5 hours)		
Delivering NELI Part 2 (2 hours)		
Delivering NELI Whole Class (5 hours)		



Learn more at pearson.com.au/oxed

A Science of learning approach to assessment and intervention

A recommended guide to implementation:



Preview LanguageScreen & ReadingScreen

- ② Try LanguageScreen and ReadingScreen practice assessments
- ② Download sample reports for LanguageScreen, ReadingScreen and the Simple View of Reading

pearson.com.au/oxed#samples



Preview NELI & NELI Whole Class

Download samples of:

- ② NELI individual and group sessions, and flashcards
- ② A NELI Whole Class session, digital slides, narrative sequence cards and song.

pearson.com.au/oxed#samples



Pearson



Enquire now pearson.com.au/oxed

