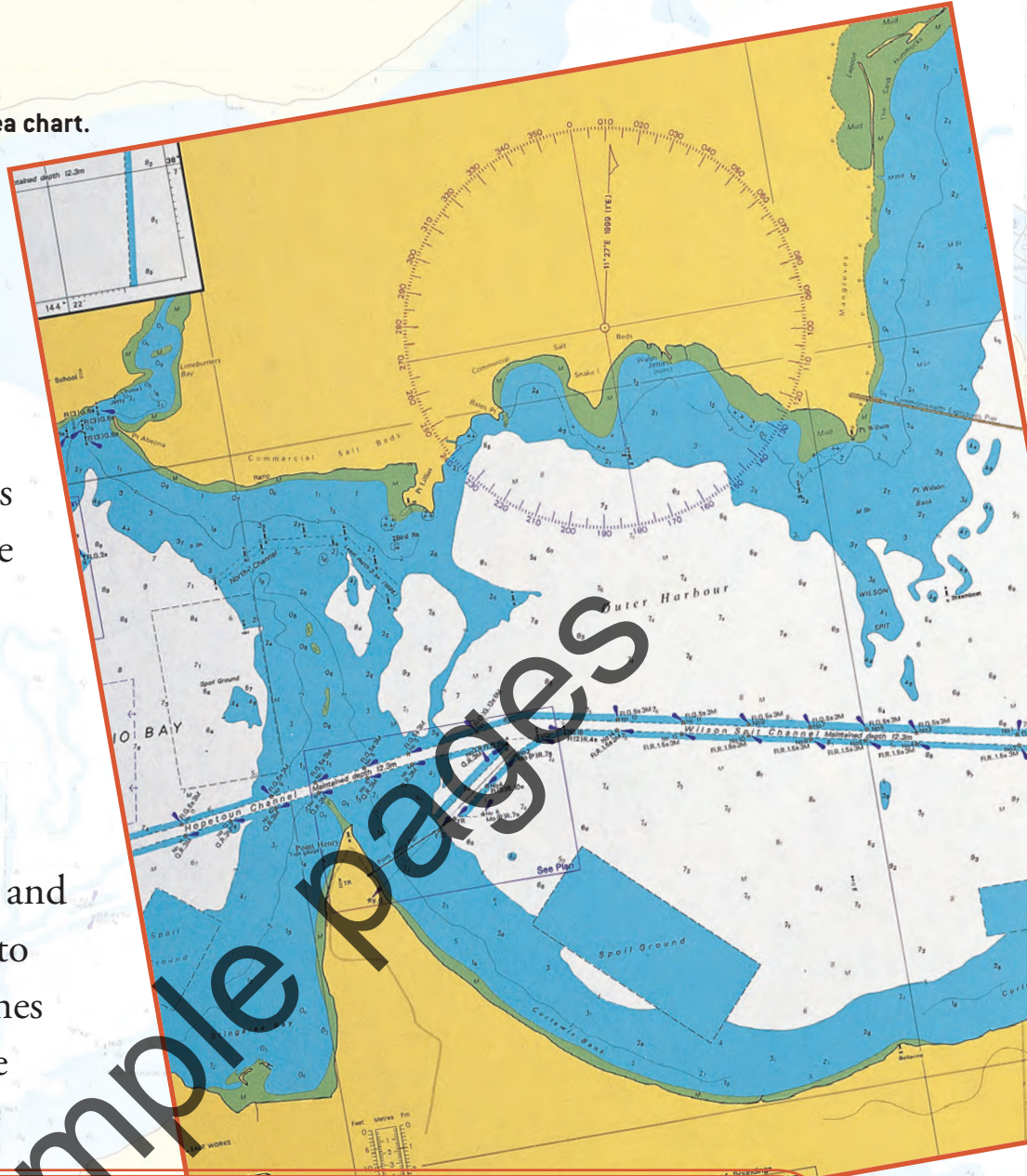


A modern-day sea chart.

Aeroplane pilots use charts to check their course through the sky. Ships' captains and navigators also use charts to plan their course over the sea. Charts have grid lines drawn on them. Navigators can use a compass, radio beams and signals from satellites to discover which grid lines their ship or aeroplane is near.



A navigator using a map to discover where her ship is in the sea.



**A farmer checking the sky for rain.**

A weather map is a picture of the Earth taken by a satellite. It shows clouds, rain, hot and cold places, and which way the wind is blowing. Pilots, farmers and fishermen often use weather maps to tell them if the weather will change or if a storm is coming. They can then prepare for these changes.

Maps are very important in our daily lives. They certainly keep us on the right track!



**A world weather map.**